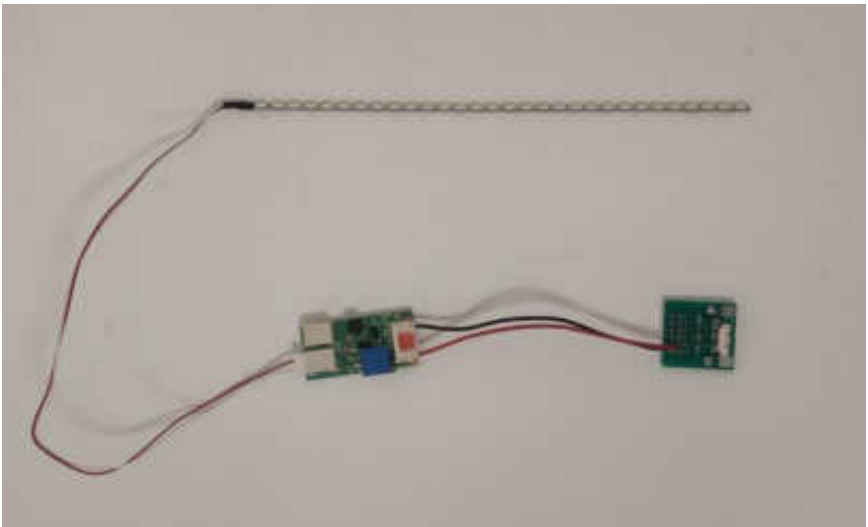


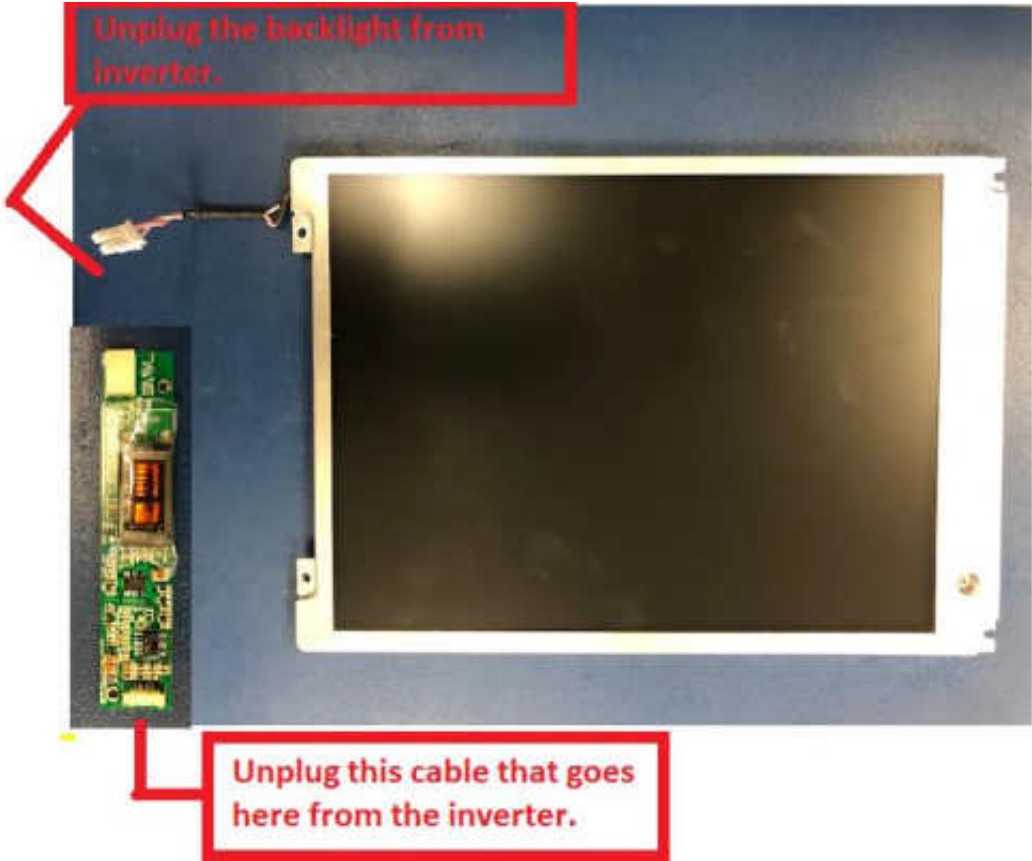
LED Backlight for AUO G084SN03 V1



Step 1: Shut the main power off and the machine power off.

Step 2: Open the HMI, Get to the LCD panel and the inverter.

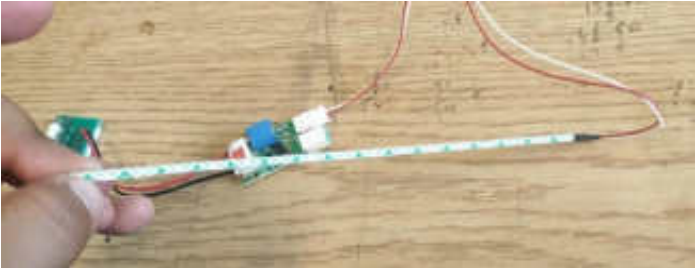
Step 3: Backlight cable from Inverter. And the controller power connector from the Inverter Board. Unscrew the inverter out of the HMI.



Step 4: Unscrew the backlight housing from the LCD. Take out the CCFL Backlight from the metal housing.



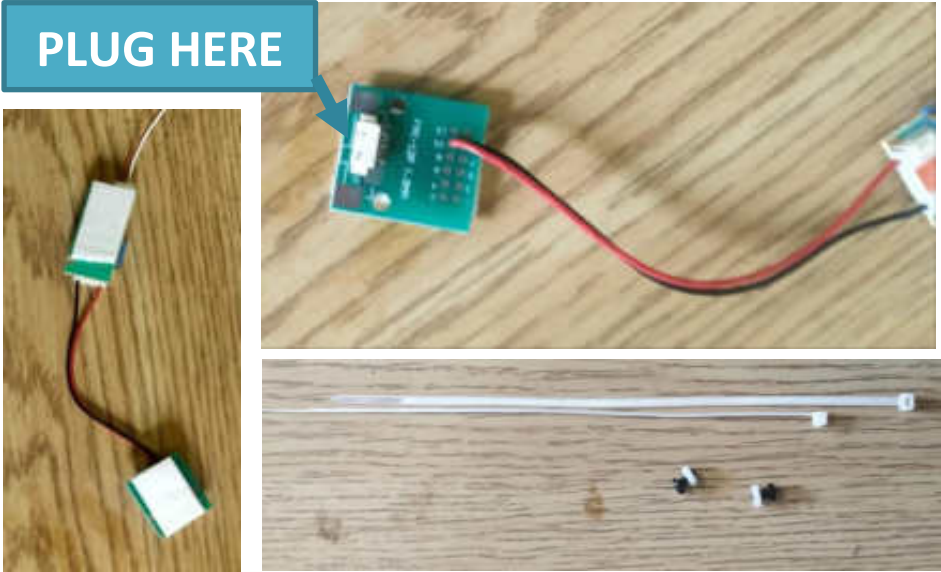
Step 5: Get your Monitech LED Backlight Replacement (MB084SN03V1). Take the tape cover off the Monitech LCD backlight. Stick the LED Strip in the Backlight housing.



Step 6: Mount the Backlight housing back into to the LCD by screwing in the Backlight metal back into the LCD.



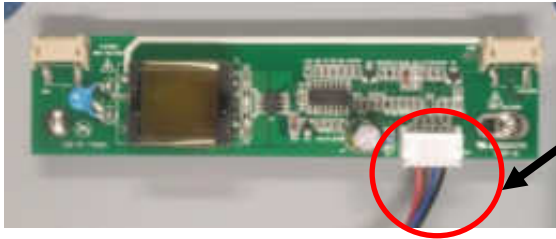
Step 7: Plug in the power plug that was going to your old Inverter into our adaptor board. Use the double-sided tape on back of our inverter boards to stick them where you have room. Or use the nylon hardware to mount the boards anywhere you can. Use the Zip ties to clean up access wires.



Step 8: Assemble everything back together and turn on main power and machine power, you should get a lit-up screen.

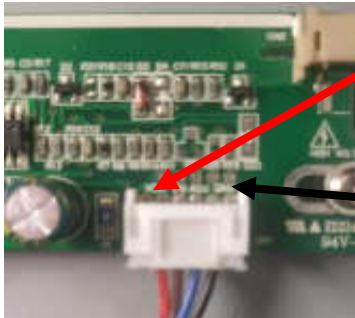
IF YOU HAVE A DIFFERENT INVERTER:

Step 1: Identify the the Ground and 12 VDC Wires on the input of your Inverter Board. With a Voltmeter.



Inverter

Input Connector

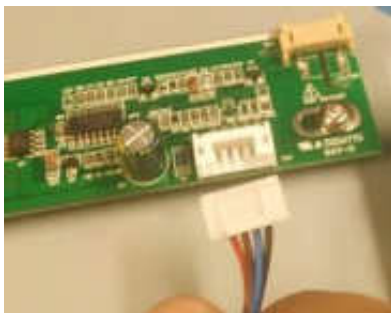


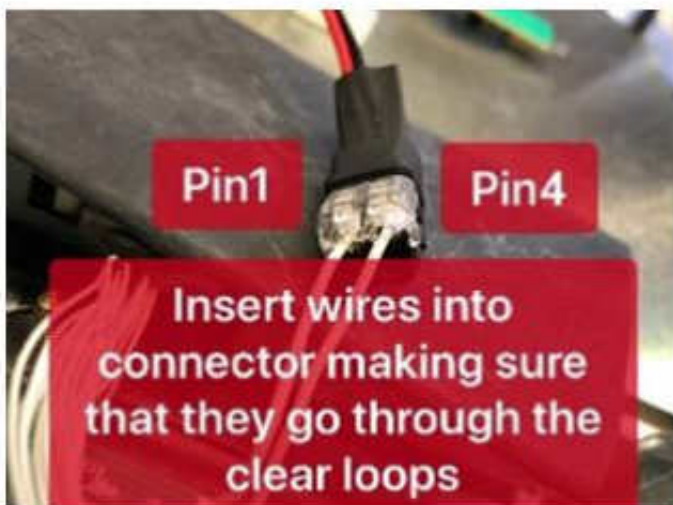
12 VDC

GROUND

NOTE: IF YOU CAN NOT FIND THE 12 VDC & GROUND. YOU CAN TYPE IN THE INVERTER PART # ONLINE. YOU DOWNLOAD THE DATA SHEET AND FIND OUT THE PIN_OUT OF THE INPUT POWER. THER YOU CAN GET THE 12 VDC and GROUND.

Step 2: Now that you have identified the 12 VDC & GROUND you can take the wires out of its connector. Then connect the ground of the inverter input to our black coming out of our board. Then connect the 12 VDC of the inverter input to our red coming out of our board. Use the white dual clip black connector to connect the wires together.





**NOW YOU CAN
SEE THE CREEN
IN YOUR
HMI!!!**

Enjoy your rejuvenated HMI. Call us to order more HMI replacement parts.

For Technical Support, Call

1-877-493-6105

Support@Monitech.com

MONITECH

20 Howard Place
Kitchener, Ontario N2K 4Z4
CANADA 519.725.2222
www.monitech.com