

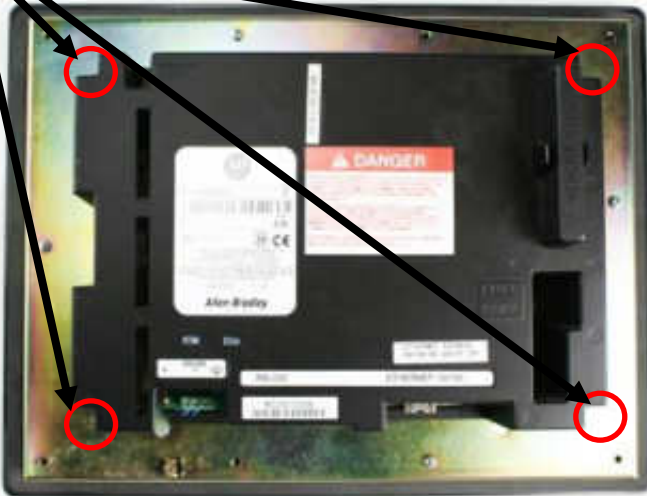
New LED backlight for your PanelView 1000

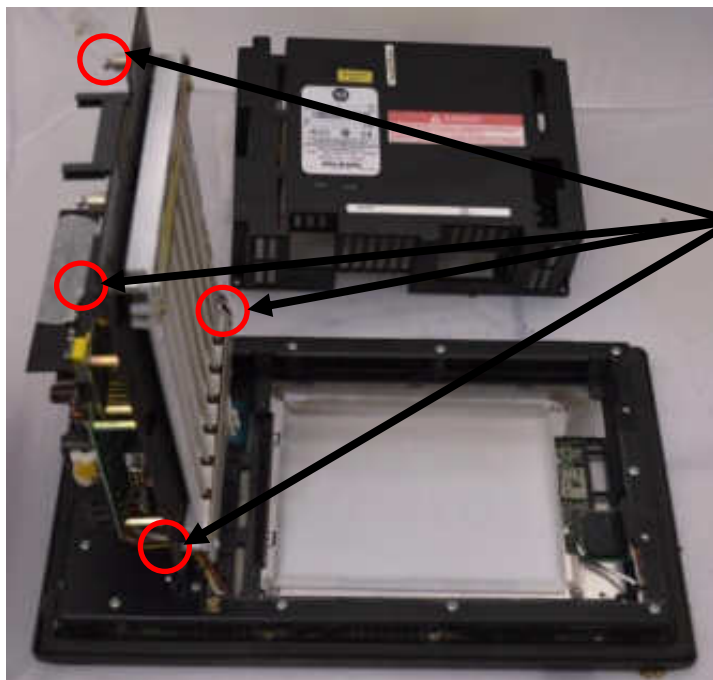


Original HMI of Allen-Bradley PanelView 1000

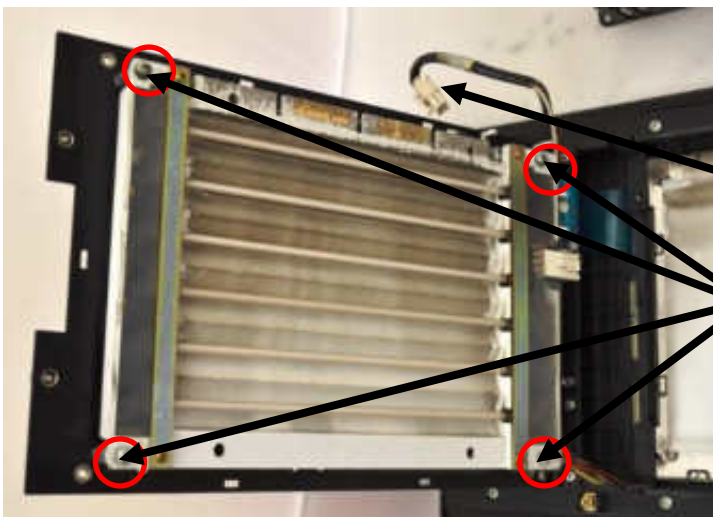


Remove back cover
(4 screws).



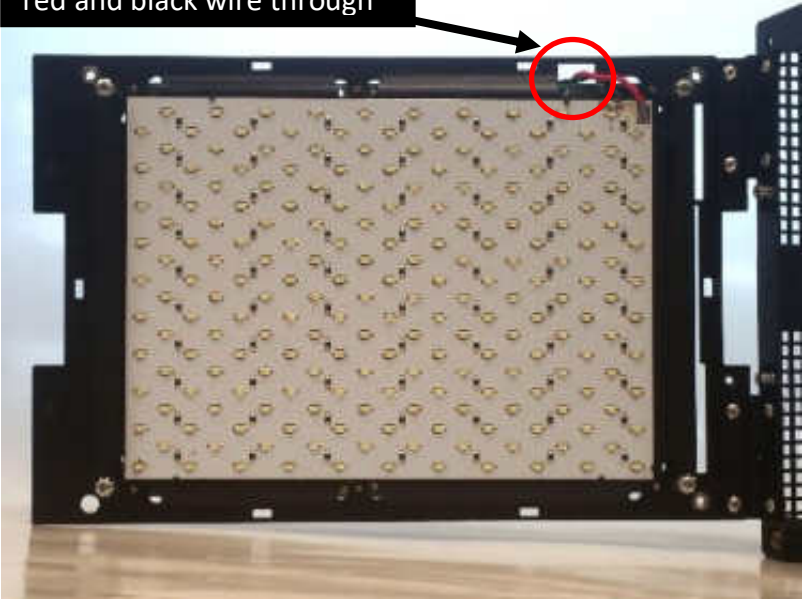


Loosen 4 screws and open hinge.

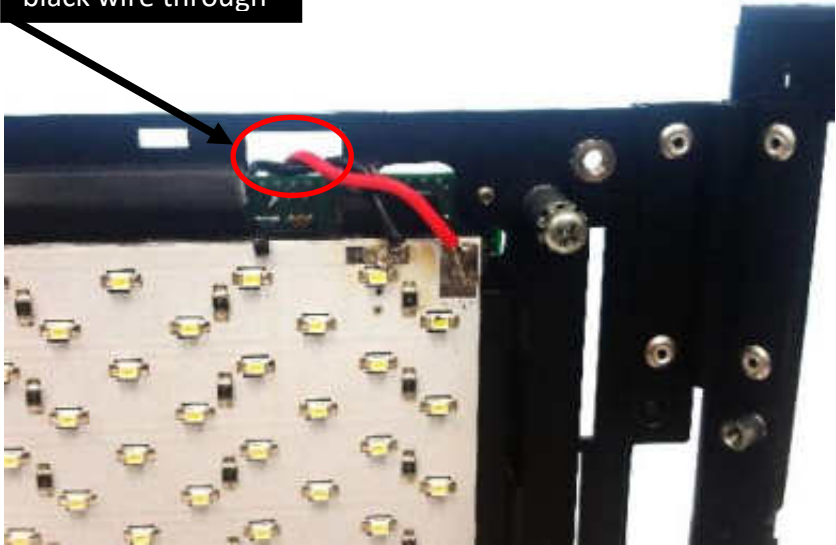


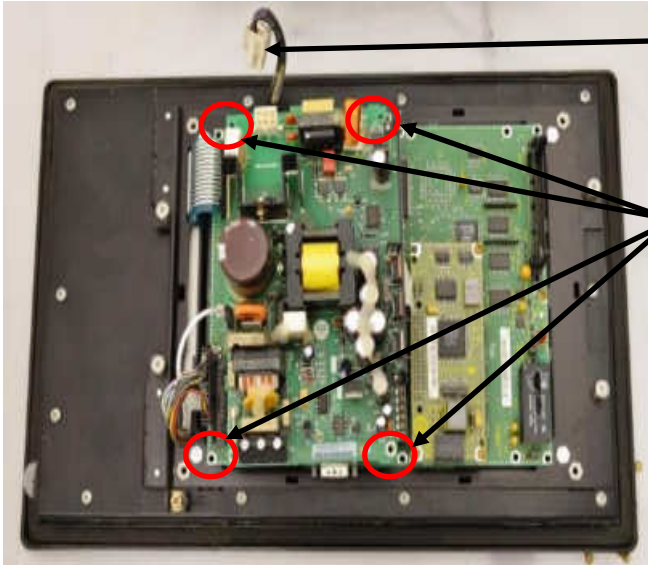
Unplug wire.
Remove 4 screws.

Install MB1000LED. Route red and black wire through



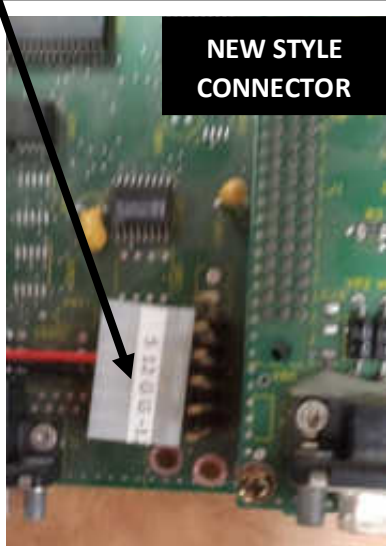
Route red and black wire through





Unplug power connector.
Remove power supply (top board—4 screws and 4 wires).

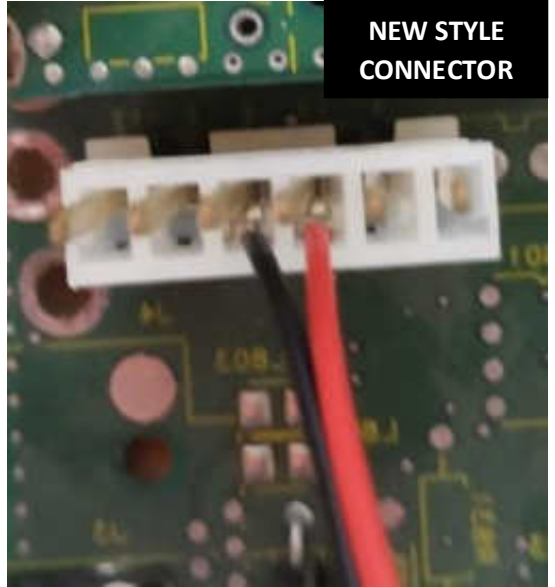
The new style connector is easy to slide into the gold pins. Make sure red & black wire goes onto the 12 & G (Ground) gold pins.



OLD STYLE CONNECTOR



NEW STYLE CONNECTOR



Reassemble. Full LED lighting, and no more heat issues!



Enjoy your rejuvenated Monitor.
Call us to order more HMI replacement parts.

Keep your AB PanelView's up and running!



Replacement: LCD's, Backlight's, Keypad's
& Touchscreen's for the whole 550 line.

Replacement: LCD's, Backlight's, Keypad's
& Touchscreen's for the whole 600 line.



Replacement: LCD's, Backlight's, Keypad's
& Touchscreen's for the whole 900 line.

Replacement: LCD's, Backlight's, Keypad's
& Touchscreen's for the whole 1000 line.



Replacement: CRT TO LCD
CONVERSION's, Backlight's, Keypad's &
Touchscreen's for the whole 1200 line.

Replacement: CRT TO LCD
CONVERSION's, Backlight's, Keypad's &
Touchscreen's for the whole 1400 line.

For Technical Support, Call
1-877-493-6105
Support@Monitech.com

MONITECH

20 Howard Place
Kitchener, Ontario N2K 4Z4
CANADA 519.725.2222
www.monitech.com