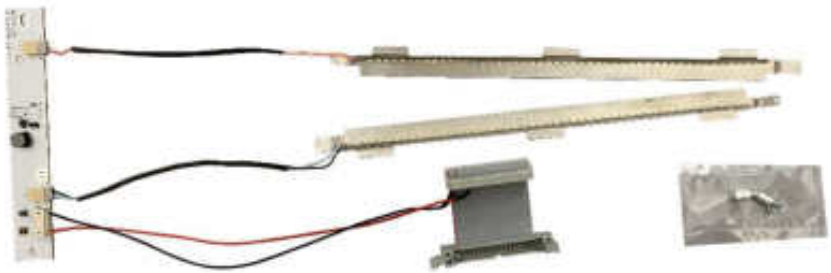
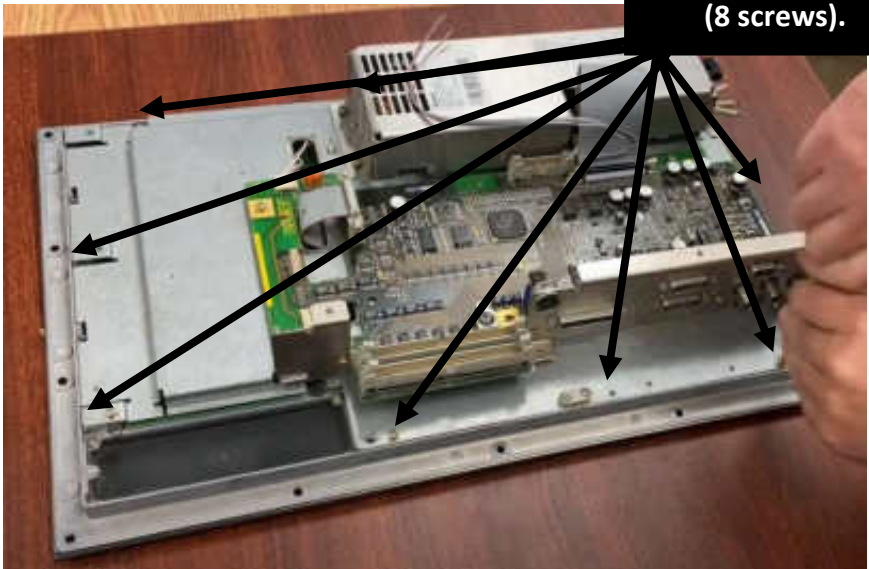


LED backlight strips for Siemens 840C, 6FC5103-0AB01-0AA2 Original LCD version





**Remove back cover
(8 screws).**





Separate the front bezel from the control

Unplug the 2 backlight cables





Remove the LCD Panel and remove the 4 screws for the backlight





Add nut onto each screw as a spacer and install the new LED backlight and re-install the screws



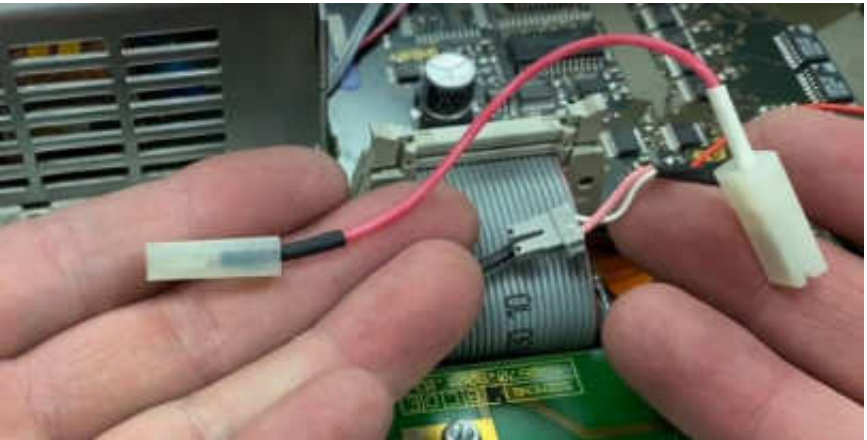


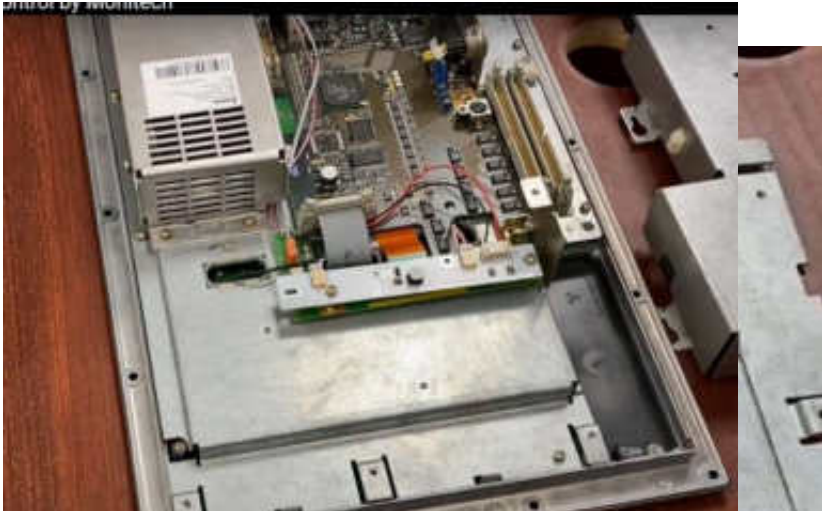
- Connect the video to the LCD Panel
- re-attach it to the control.
- Run the wires through the holes





Remove this red wire. It is the power for the old CCLF backlights. It is not required and **MUST BE REMOVED!**





Make sure the video connector is installed

Add the 2 x M3 standoffs

Mount the new LED inverter board

Connect the LED cables x 2





**Add new power cable and connect the red and black wires
to the new LED invert board**

Re-install the original back cover



For Technical
Support, Call
1-877-493-6105
Support@Monitech.com

MONITECH
PRACTICAL SOLUTIONS FOR INDUSTRIAL DISPLAYS
20 Howard Place
Kitchener, Ontario N2K 4Z4
CANADA 519.725.2222
www.monitech.com