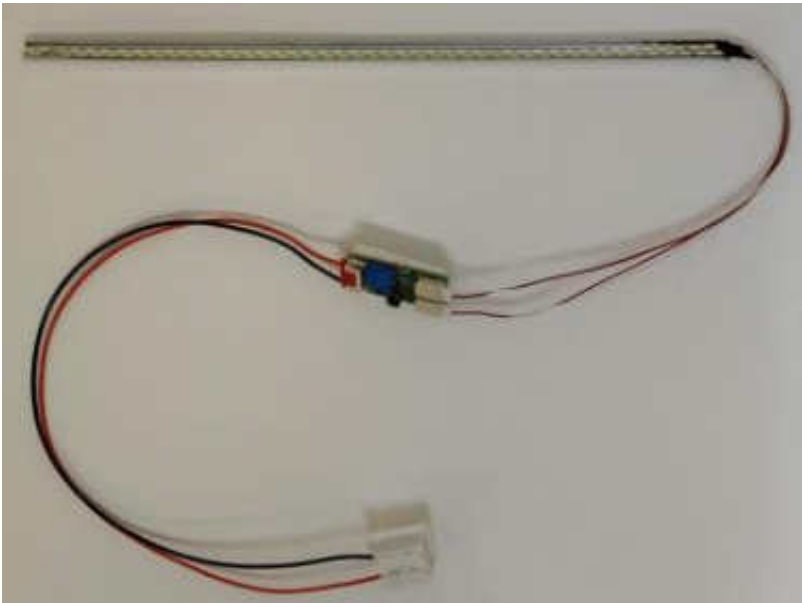


# New LED backlight for your Sharp LQ121S1LG55



**Step #1) Unfasten the or unmount the LCD Panel from your machine. Unplug LVDS cable.**

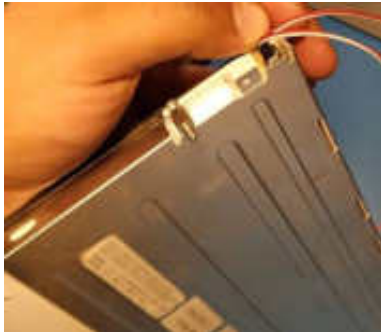
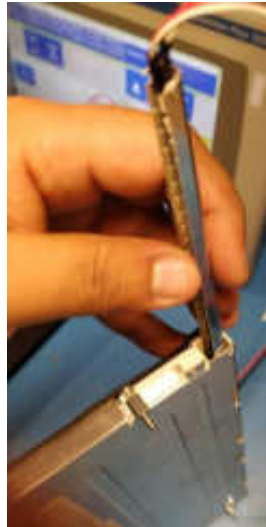
**NOTE: THIS STEP IS ONLY NEEDED IF YOU CANT THE REACH BACKLIGHT.**



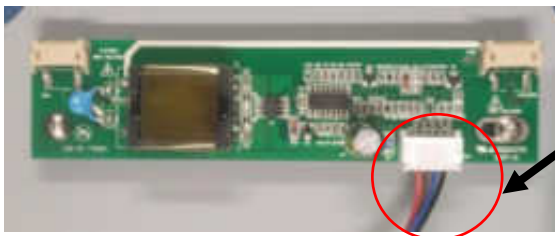
**Step #2) Take the old CCFL Backlight out of your LCD panel. Unplug the CCFL Backlight connectors from the inverter. Unscrew the backlight mounting. Slide the backlight out of the LCD.**



**Step #3) Get your new LED Backlight from Monitech (MB121SHARP). Slide it into your panel.**

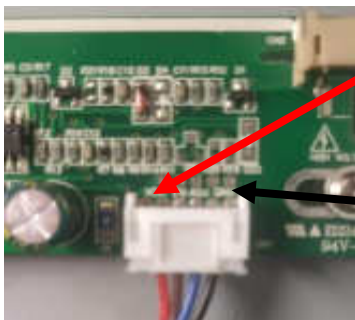


**Step #4) Identify the the Ground and 12 VDC Wires on the input of your Inverter Board. With a Voltmeter.**



**Inverter**

**Input Connector**



**12 VDC**

**GROUND**

**NOTE: IF YOU CAN NOT FIND THE 12 VDC & GROUND. YOU CAN TYPE IN THE INVERTER PART # ONLINE. YOU DOWNLOAD THE DATA SHEET AND FIND OUT THE PIN\_OUT OF THE INPUT POWER. THER YOU CAN GET THE 12 VDC and GROUND.**

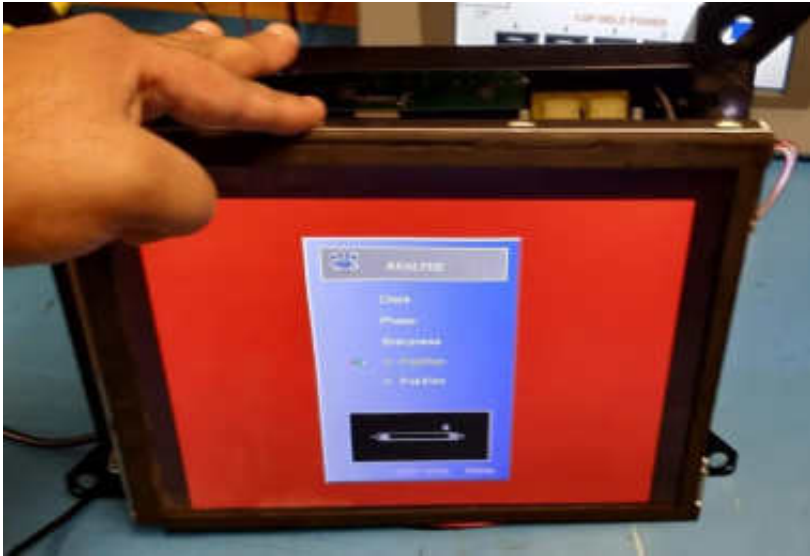
**Step #5)** Now that you have identified the 12 VDC & GROUND you can take the wires out of its connector. Then connect the ground of the inverter input to our black coming out of our board. Then connect the 12 VDC of the inverter input to our red coming out of our board. Use the white dual clip connector to connect the wires together.



**Step #6)** Now mount our inverter board by using the double sided tape or using the the M3 Nylon hardware provided to you in the package. Use the zip ties to secure any loose wires.



**Step #7) Mount the LCD back in place, plug in LVDS Cable if needed. Then power on your machine to test the backlight.**



For Technical Support, Call  
**1-877-493-6105**  
Support@Monitech.com



20 Howard Place  
Kitchener, Ontario N2K 4Z4  
CANADA 519.725.222  
[www.monitech.com](http://www.monitech.com)

## Keep your AB PanelView's up and running!



Replacement: LCD's, Backlight's, Keypad's & Touchscreen's for the whole 550 line.



Replacement: LCD's, Backlight's, Keypad's & Touchscreen's for the whole 600 line.



Replacement: LCD's, Backlight's, Keypad's & Touchscreen's for the whole 900 line.



Replacement: LCD's, Backlight's, Keypad's & Touchscreen's for the whole 1000 line.



Replacement: CRT TO LCD  
CONVERSION's, Backlight's, Keypad's &  
Touchscreen's for the whole 1200 line.



Replacement: CRT TO LCD  
CONVERSION's, Backlight's, Keypad's &  
Touchscreen's for the whole 1400 line.