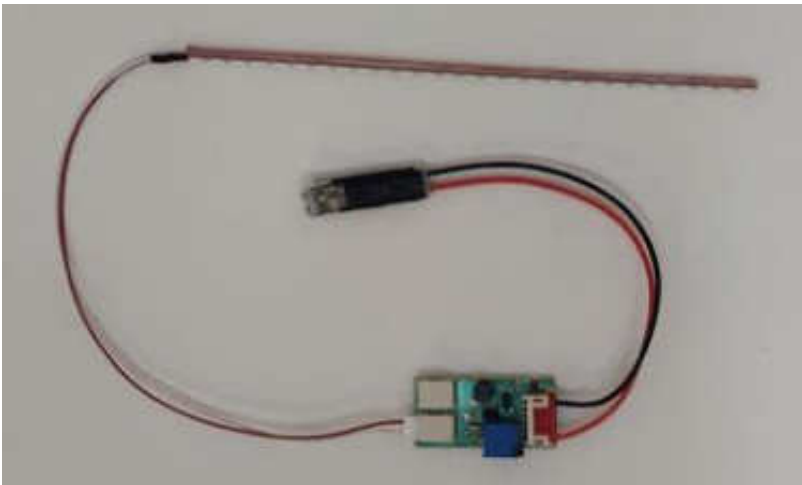
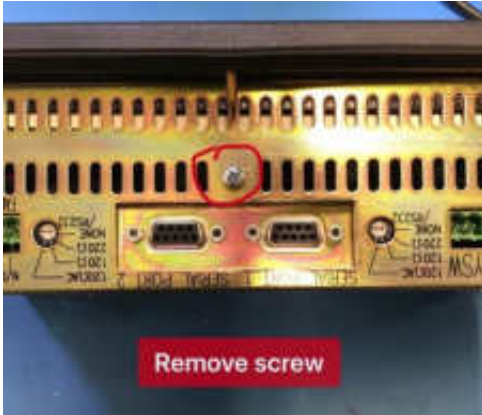


LED Backlight for CUTLER-HAMMER 1775-PAPP-1700 HMI



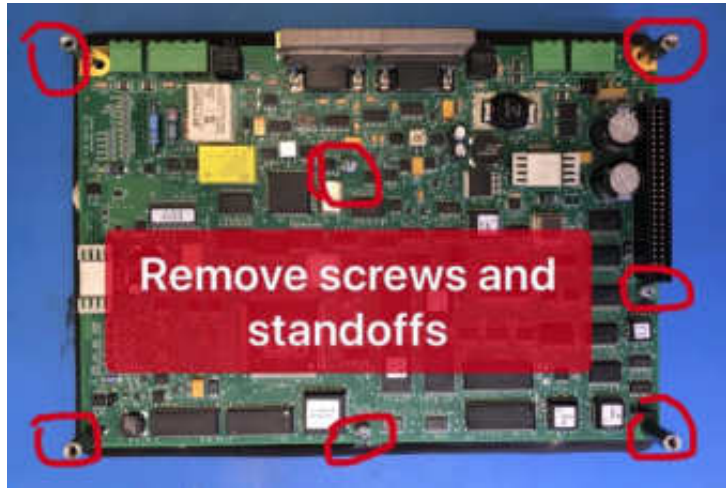
Step 1

Remove cover.



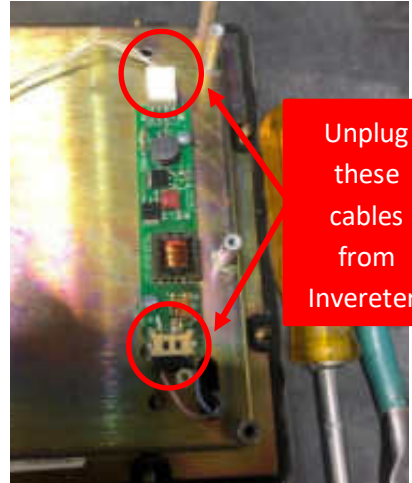
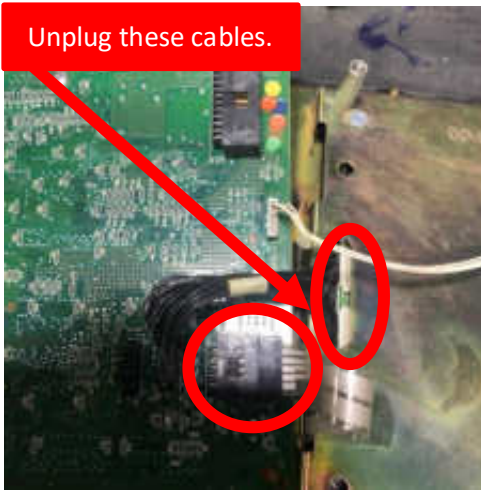
Step 2

Remove circuit board



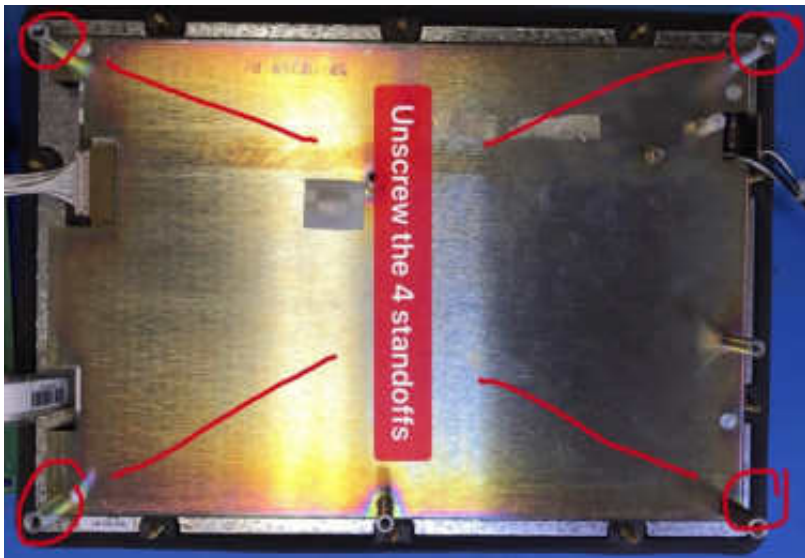
Step 3

Unplug Touchscreen Cable, LDVS Cables & Backlight cable from Inverter.



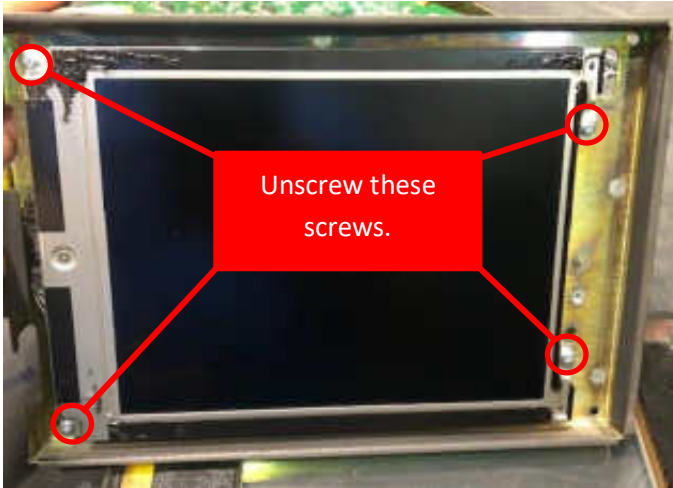
Step 4

Remove LCD panel assembly.



Step 5

Remove the LCD panel.



Step 6

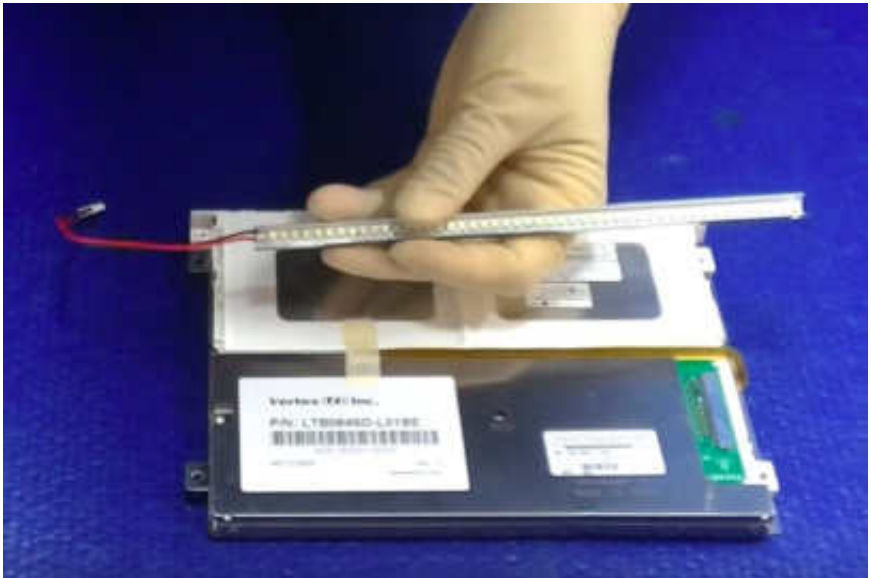
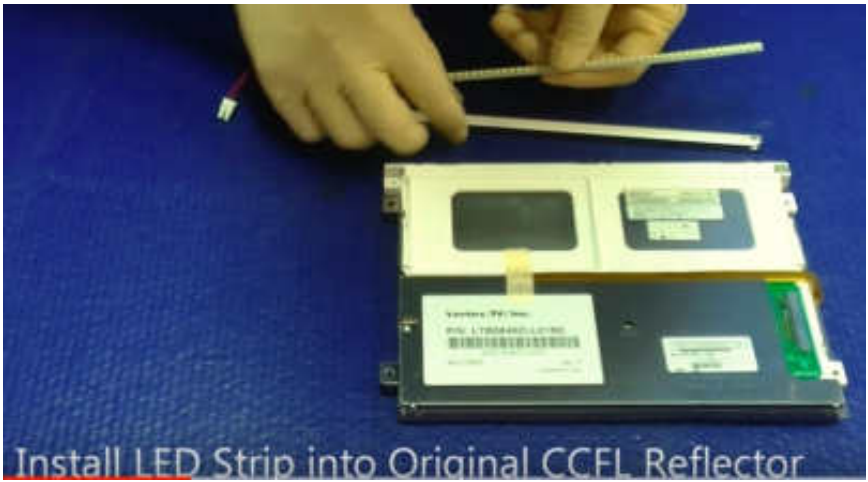
Remove the screws holding the backlight housing. Slide the backlight out of your LCD.

Unscrew these screws.



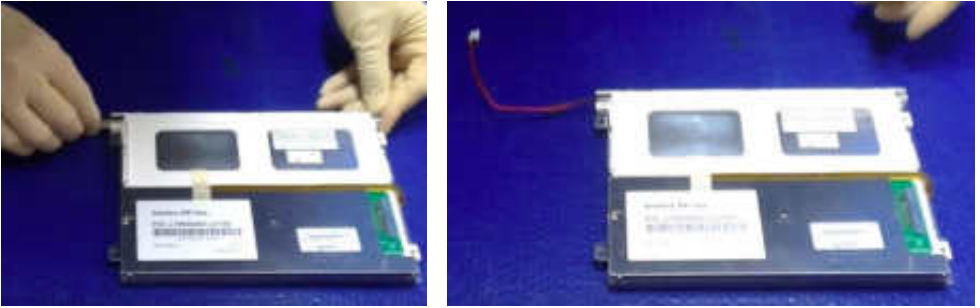
Step 7

Remove the CCFL Bulb out of the backlight housing. Replace the bulb with the Monitech LED Backlight Strip. Remove the tapa cover to stick the LED Strip into the Backlight housing.



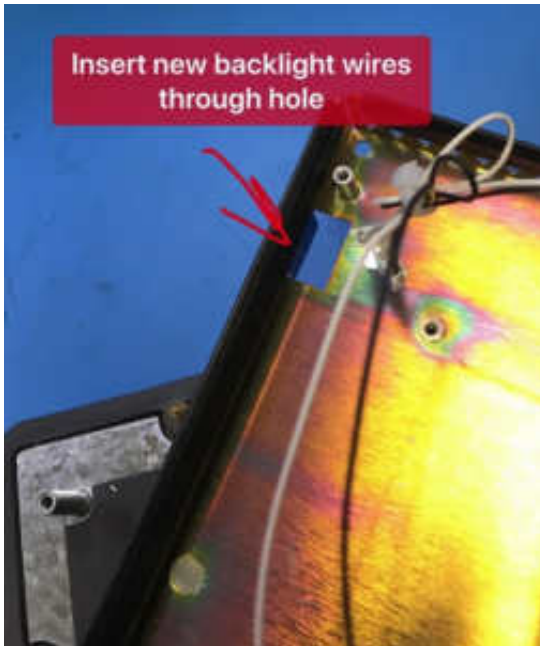
Step 9

Mount the Backlight housing back into to the LCD.



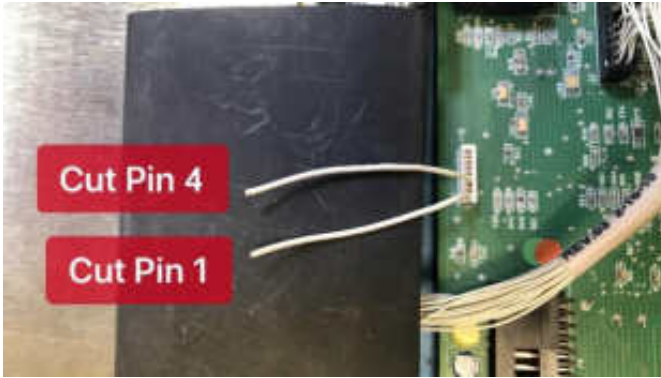
Step 10

Reinstall the LCD panel as in **Step 4**. Route the LED backlight wires through this hole.



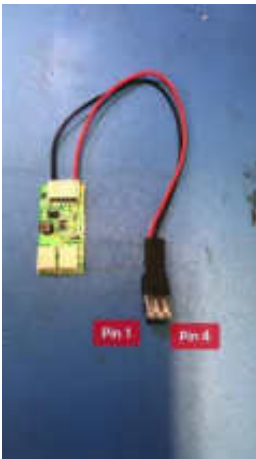
Step 11

Identify pins 1 and 4 on the control board and cut them to about 5 cm in length. Remove or cut the rest of the wires as they are no longer needed.



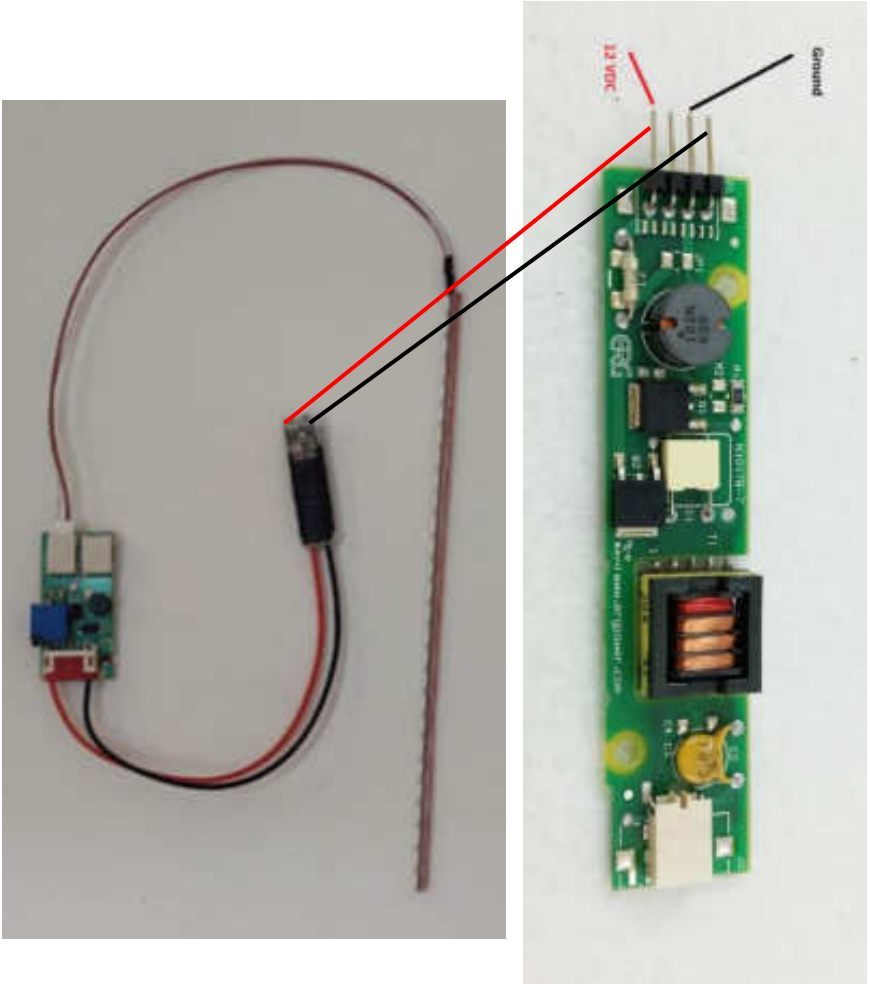
Step 12

Identify pins 1 and 4 on the LCD backlight inverter, then insert the wires from previous step into the connector. Push closed the connector until the side clips are engaged.



Step 13

OR AND ALTERNATIVE SETUP IS TO US PIN 4 OF INVERTER SIDE CABLE (12 VDC) & PIN 2 OF INVERTER SIDE CABLE (GROUND). First Identify if they measure 12 VDC and Ground. The cut and strip the identified wires. Then attach 12 to red and G to the black wire of the connector going into out inverter.



Step 14

Located area on the back of LCD mounting plate and remove the release paper from the back of the inverter board. Stick inverter board down. Plug the LED backlights into the inverter board. It doesn't matter which connector you plug into.



Step 15

You have now completed installing the LED backlights and now proceed



to putting it all back together. To do this follow **Steps 1-6** in reverse order.



Enjoy your rejuvenated HMI. Call us to order more HMI replacement parts.

Keep your PANELMATE HMI's up and running!



ML1211LLMATE -12.1" LCD Upgrade for (Panelmate/Cutler) with 14" CRT. Just take a picture of your video connector

ML080MATE -8" LCD Upgrade for (Panelmate/Cutler) with 9" CRT. Just take a picture of your video connector



MPC21P -LCD Panel kit for the PanelMate 1775K



MF1775T- Touchscreen and overlay and Plexiglas for Panelmate 1775T. 8.0" Tocushscreen.

For Technical Support, Call
1-877-493-6105
Support@Monitech.com



20 Howard Place
Kitchener, Ontario N2K 4Z4
CANADA 519.725.2222
www.monitech.com