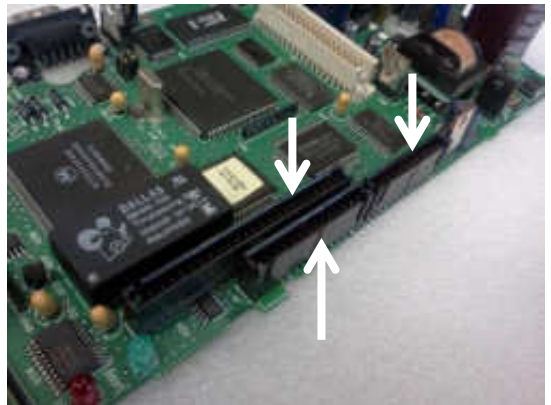


Fiber- optics replacement

FOR YOUR PANELVIEW 550

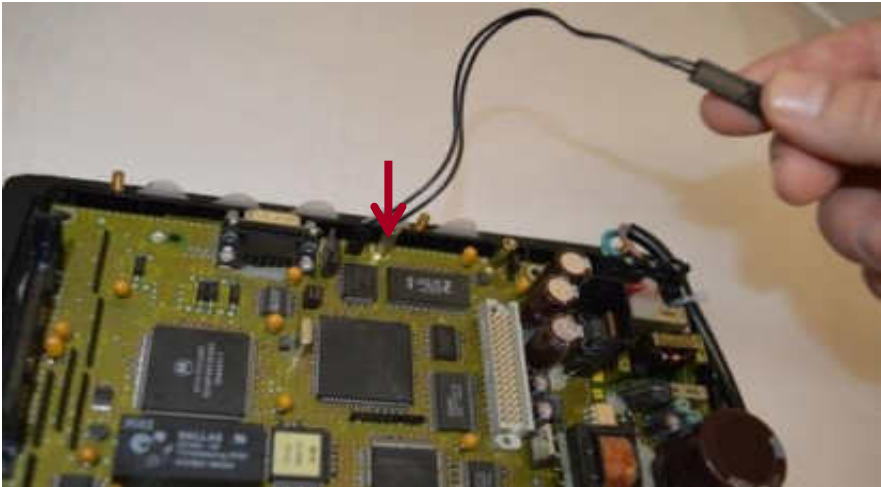


1. After the power supply and all cables have been disconnected, and the unit has cooled, remove rear plastic bezel.
2. Remove fiber optic and lamp.
3. Remove back cover.
4. Disconnect ribbon cables. The touchscreen version has 3 cables, and the keypad version has two.



5. Disconnect lamp power cable extension (J4).

Later, you will reconnect the lamp.



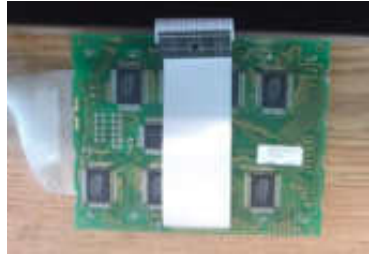
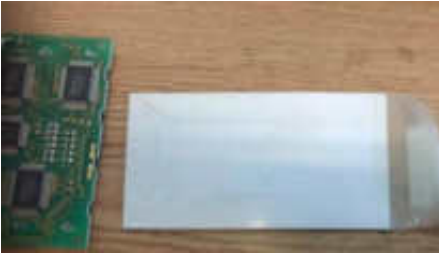
6. Remove computer board (6 or 7 screws).



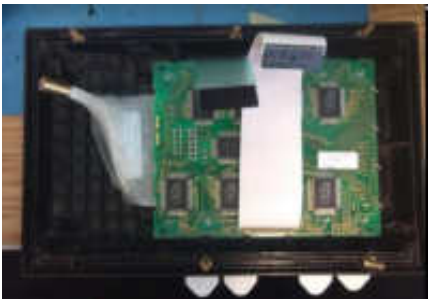
7. Remove the 4 screws that separate the LCD panel from the face.



8. Take the old fiber optics out and slider the new one in.



9. Re-attach the LCD panel with 4 screws previously removed.



10. Re-attach computer board with screws, and reconnect the 2 ribbon cables.



11. Plug your backlight or lamp back into J4.



12. Attach Back cover back on with screws and put you backlight or lamp back in place, put your new fiber optics back in place.



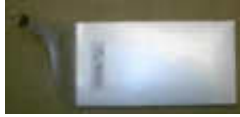
13. Test the Fiber Optics by powering up the unit, check if the screen shows a better display, if yes put on the backlight cover. Then mount it back into your machine.

Enjoy your rejuvenated Panelview 550!
Call us to order more replacement parts.

Keep your Panelview 550 up and running!



LED backlight MB550E



Fiber optic MB550FOS



Fiber optic MB55FOL



Touchscreen MF550T



Keypad MF550K



Keypad-touchscreen
MF550B

For Technical Support, Call

Take2 Electronics

1-877-260-3426

Support@Monitech.com



20 Howard Place
Kitchener, Ontario N2K 4Z4
CANADA 519.725.222
www.monitech.com