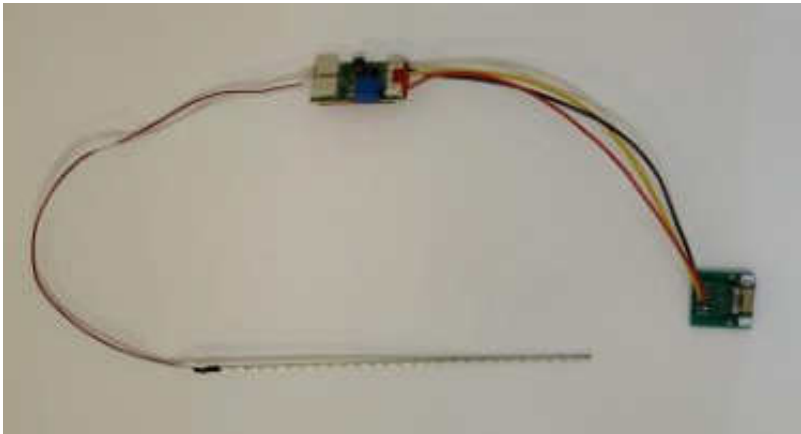


New LED backlight strip for your Okuma OSP7000, OSP700, U100 for 10.4" LCD (DMF-50260NFU-FW-7 & -FW-2) & (F-51430NFU-FW-AA & -FW-AEN)

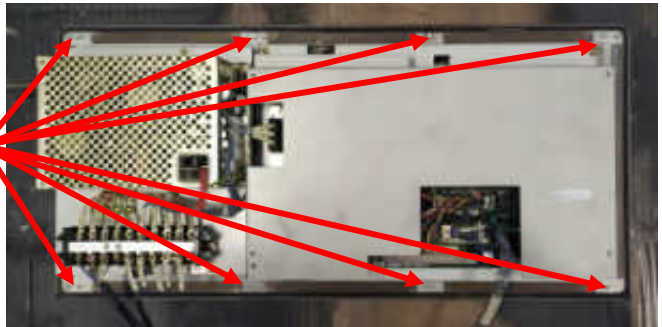


**Step #1)** Turn off power of machine & main power.

**Step #2)** Take out the HMI from the Machine, by unscrewing the 8 nuts from standoffs.



Unscrew these nuts 8 for unmounting.



**Step #3)** Take off back cover the HMI by screwing the 4 screws.



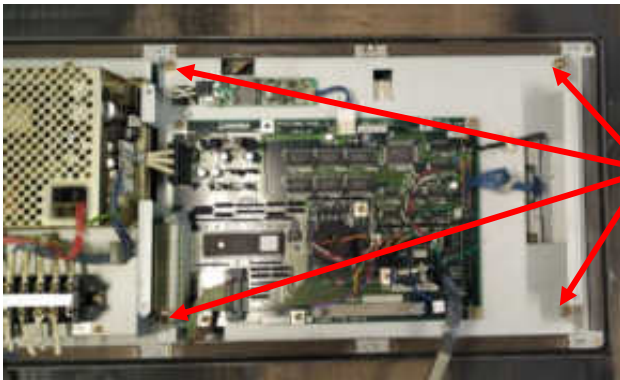
**Step #4)** Unplug CCFL connector from inverter & Unplug the LVDS cable from the LCD Panel. Then unscrew the 4 screws holding the LCD mounting plate in place.



Unplug this CCFL connector from the inverter.



Unplug this LVDS connector from the LCD.

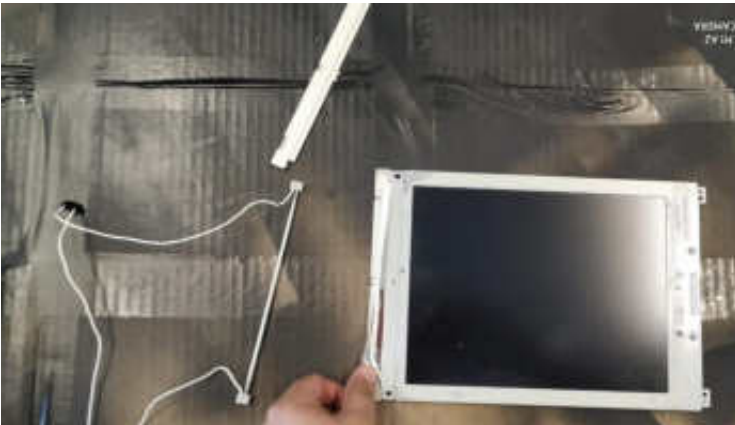


Unscrew these screws to get to the LCD.

**Step #5)** Unmount the LCD Panel by removing the screws.



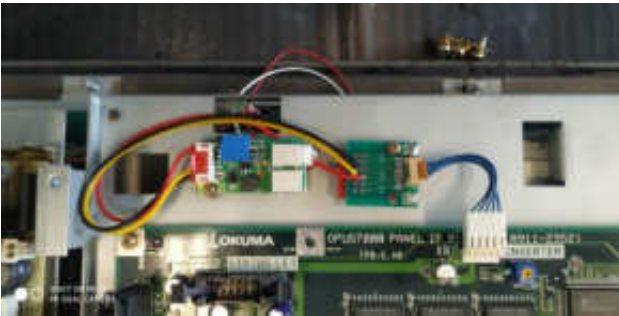
**Step #6)** Take the cover off the backlight section of the panel and take out the CCFL backlight.



**Step #7)** Get your Monitech Backlight replacement. Put it in where the CCFL bulb used to be. Make sure the bulbs are directed towards the panel and is enclosed by the aluminum foil. We have provided you with a Aluminum tape to seal the foil, or if the foil is brittle. Make sure the wire for the light go through the hole. Then put the cover of the backlight back on. Mount the LCD back into place.



**Step #8)** Feed the boards and cables from our backlight though the hole. Then remove your original inverter by unscrewing the it and unplugging the blue inverter cable. Then plug the blue inverter cable into our board and mount the boards where the standoff of your original inverter used to be, or you can use the double sided tape at the back of our board to stick them where you please.



Or you can plug in the alternative set-up, using the connector we made for the board.



**Step #8)** Mount everything back into place, connect all connectors you unplugged to re-assemble your HMI. Then power -up and now you can finally see your screen.



**Now you can see your screen!!!**

For Technical Support, Call  
**1-877-493-6105**  
Support@Monitech.com



20 Howard Place  
Kitchener, Ontario N2K 4Z4  
CANADA 519.725.222  
[www.monitech.com](http://www.monitech.com)