

LCD upgrade kit

FOR YOUR MODICON- PANELMATE (91-00918-03,
91-01064-00 & 91-00744-10)



MONITECH
PRACTICAL SOLUTIONS FOR INDUSTRIAL DISPLAYS


IMPORTANT:

WARRANTY

Before using any MONITECH product please carefully review this Manual as well as any additional documentation provided with your shipment.

Attempting any of the following will void product warranty:

- unauthorized repairs or parts replacement
- inappropriate use or placement: exposing product to liquids, harmful gases, electrical shock, physical shock, temperatures beyond the range of -4°F to 140°F (-20°C to 60°C)
- use of electrical voltage other than 12V 4.16A (power supply and AC cable provided)
- Removal or modification of serial, product, or warranty labels.

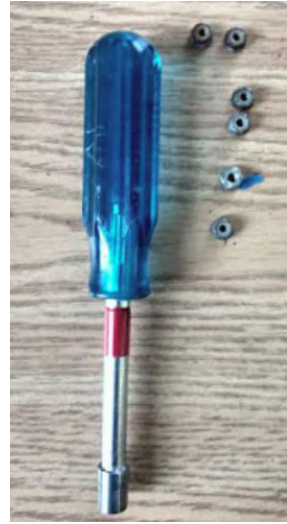
	WARNING	
	ELECTRICAL HAZARD DO NOT OPEN	
TO AVOID ELECTRICAL SHOCK DO NOT OPEN PRODUCT CASING. UNAUTHORIZED REPAIRS OR PARTS REPLACEMENT ARE PROHIBITED AND WILL VOID PRODUCT WARRANTY. PLEASE RETURN TO MONITECH FOR REPAIRS.		

REMOVAL:

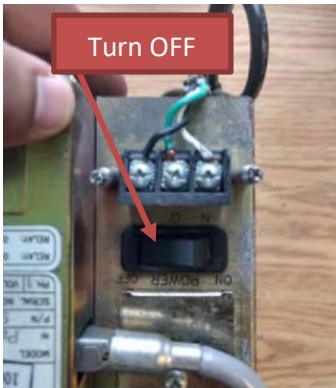
Step #1) Turn off turn off main power, turn off machine.

Step #2) Take out the monitor & controller from your machine by loosening all surrounding bolts. Power off your controller and monitor via switch. Unplug monitor and controller from machine.

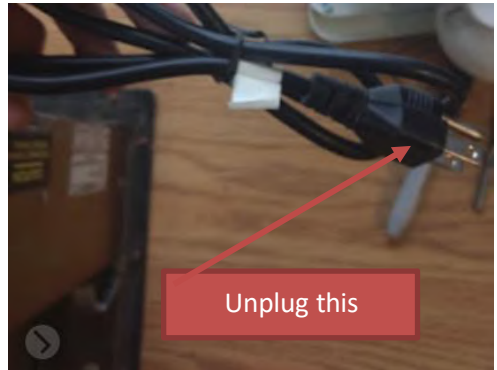
Monitor & Controller



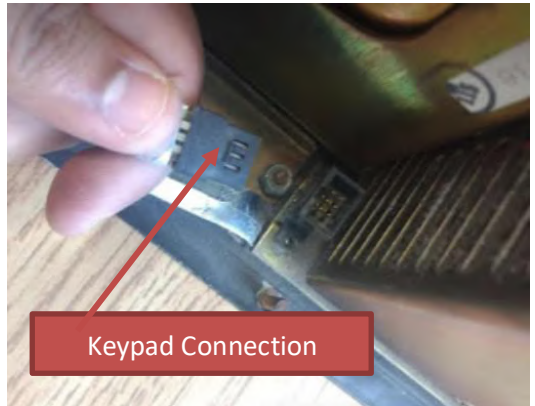
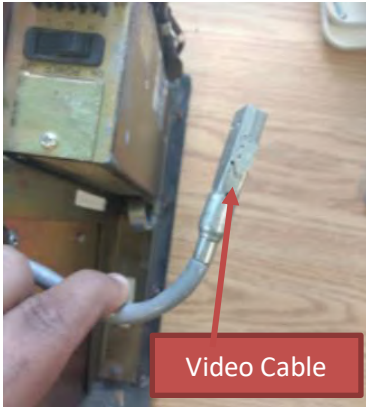
Turn OFF



Unplug this



Step #3) Make sure to take a picture of all your connections before unplugging any of your connections. Unplug your video cable and keypad cable.



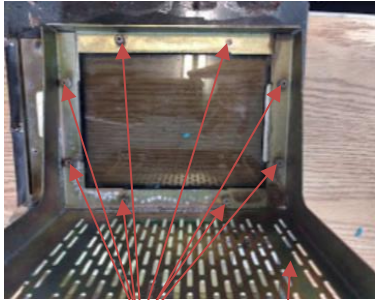
Step #4) Take off controller.



Step #5) Take off your CRT from your machine.



Step #6) Take off all bolts surrounding front frame. Then lift front frame up and take out standoffs from front bezel.

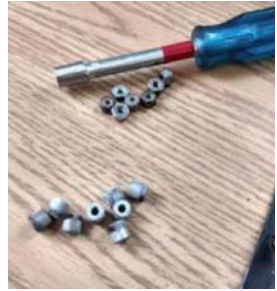


Nuts

Front Frame



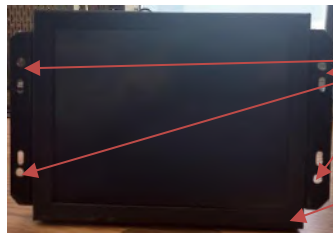
Standoffs



Front Bezel

INSTALLATION:

Step #7) Put front frame back on to the front bezel. Open the monitor that Monitech has supplied you. Place our monitor into opening shown the holes of the brackets should match. Use 4 bolts previously taken off the front frame to mount our monitor to the front frame.



4 mounting holes

Monitech Monitor



Step #8) Put back the controller into the front bezel. Open our MK105 use our Hardware kit (MH2000) to fasten the controller to the front frame with bolts and screws.



MH2000



Fasten the controller as shown

Step #9) Takeout MAV066A from MK105 box. Do not use any of the other cables, those cables are only for testing the monitor on a computer. Plug-in MAV066A to your controller as shown and plug-in VGA cable to Monitech monitor and plug-in power jack into Monitech monitor.



MAV066A

Input to your controller

Output VGA Video to Monitech Monitor

Power Jack to Monitech Monitor



Step #10) Plug your keypad connector back in. Plug monitor and controller back in. Turn on your control to test if monitor is working before mounting.



Step #11) If everything is alright. Turn off power to control then put front bezel with control and Monitech monitor back onto machine then turn on main power of your machine and turn on machine CNC machine and you're ready to go. If you need to adjust your screen size use our user guide.



10.4" BUCH LCD USER MANUAL T SERIES

One touch and
you're ready to go



MONITECH
PRACTICAL SOLUTIONS FOR INDUSTRIAL DISPLAYS

REV. A AUGUST 2017

Enjoy your rejuvenated Monitor. Call us to order more HMI replacement parts.

Keep your PANELMATE HMI's up and running!

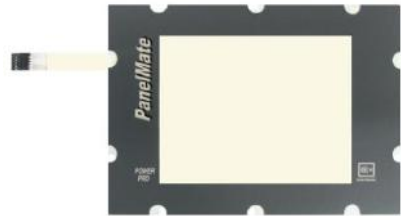


ML121LLMATE -12.1" LCD Upgrade for (Panelmate/Cutler) with 14" CRT. Just take a picture of your video connector

ML080MATE -8" LCD Upgrade for (Panelmate/Cutler) with 9" CRT. Just take a picture of your video connector



MPC21P -LCD Panel kit for the PanelMate 1775K



MF1775T- Touchscreen and overlay and Plexiglas for Panelmate 1775T. 8.0" Tocushscreen.

For Technical Support, Call
1-877-493-6105
Support@Monitech.com



20 Howard Place
Kitchener, Ontario N2K 4Z4
CANADA 519.725.2222
www.monitech.com

Keep your AB PanelView's up and running!



Replacement: LCD's, Backlight's, Keypad's & Touchscreen's for the whole 550 line.



Replacement: LCD's, Backlight's, Keypad's & Touchscreen's for the whole 600 line.



Replacement: LCD's, Backlight's, Keypad's & Touchscreen's for the whole 900 line.



Replacement: LCD's, Backlight's, Keypad's & Touchscreen's for the whole 1000 line.



Replacement: CRT TO LCD
CONVERSION's, Backlight's, Keypad's &
Touchscreen's for the whole 1200 line.



Replacement: CRT TO LCD
CONVERSION's, Backlight's, Keypad's &
Touchscreen's for the whole 1400 line.