

LCD upgrade kit

For your Cincinnati Milacron Acramatic 850/950 (Light) with 14" CRT

950



850



MONITECH
PRACTICAL SOLUTIONS FOR INDUSTRIAL DISPLAYS



IMPORTANT:

WARRANTY

Before using any MONITECH product please carefully review this Manual as well as any additional documentation provided with your shipment.

Attempting any of the following will void product warranty:

- unauthorized repairs or parts replacement
- inappropriate use or placement: exposing product to liquids, harmful gases, electrical shock, physical shock, temperatures beyond the range of -4°F to 140°F (-20°C to 60°C)
- use of electrical voltage other than 12V 4.16A (power supply and AC cable provided)
- Removal or modification of serial, product, or warranty labels.

	WARNING	
	ELECTRICAL HAZARD DO NOT OPEN	
TO AVOID ELECTRICAL SHOCK DO NOT OPEN PRODUCT CASING. UNAUTHORIZED REPAIRS OR PARTS REPLACEMENT ARE PROHIBITED AND WILL VOID PRODUCT WARRANTY. PLEASE RETURN TO MONITECH FOR REPAIRS.		

REMOVAL:

Step #1) Turn off turn off main power, turn off machine.

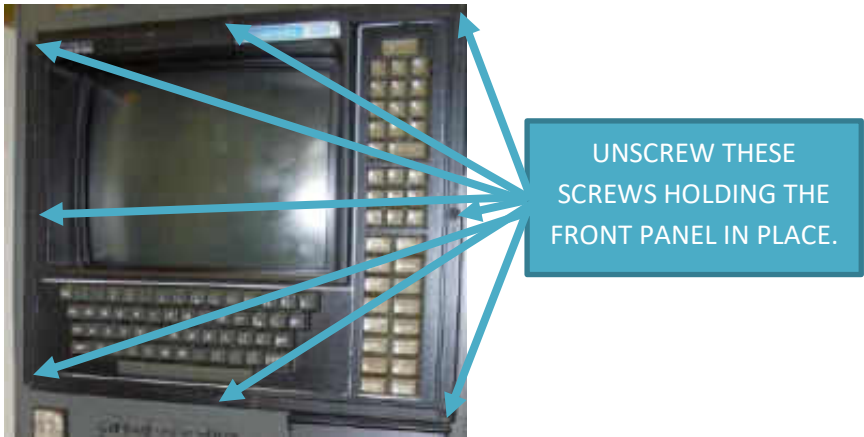
Step #2) Open up the back cover of the HMI by unscrewing all surrounding screws. Unplug the fan power, Unplug the 5 wires for RGB V & H Hold and Unscrew the wires going to power terminal. Make sure to take a picture of the connections before unplugging. Keep the back cover and all screws removed for re-installation.



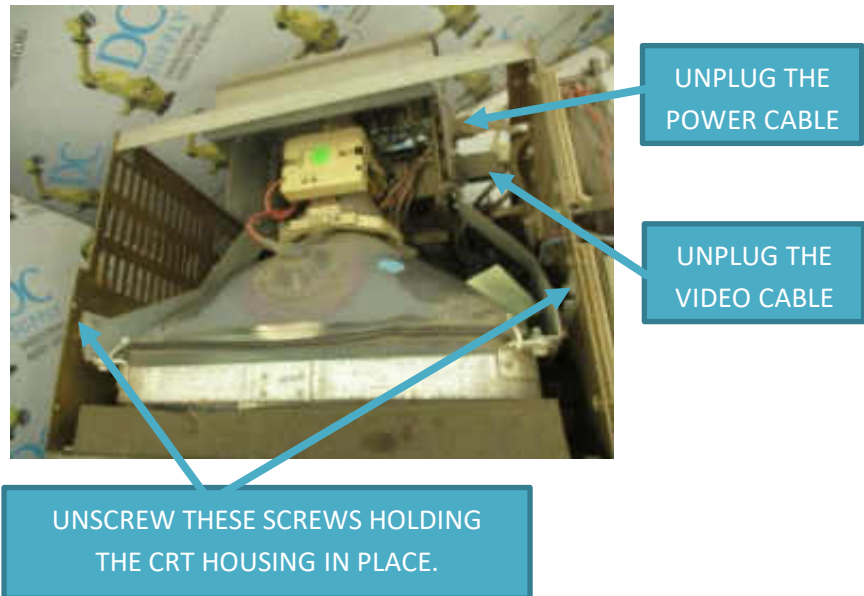
UNSCREW
THESE SCREWS
HOLDING THE
FRONT PANEL IN
PLACE.

Unplug Fan Power
Unscrew Power Terminal
Unplug 5 Wire RGB H & V HOLD

Step #3) Take the front panel off the HMI by unscrewing all surrounding screws. Keep the fasteners that held the front panel for re-installation.



Step #4) Now your left with the assembly of the front panel attached to the CRT Housing. Unscrew the fasteners holding the CRT Housing in place & Unplug CRT Power & Video Cable. Keep these fasteners for re-installation.



Step #5) Remove high voltage from the CRT by placing a screwdriver underneath the rubber of the anode lead and the other end touch metal, with another screwdriver put the tip onto metal and cross it with the first screwdriver. Then remove the anode lead by pushing one contact in so that it



Step #6) Remove the neck board, disconnect the yolk, degauss cables & remove all other boards from housing they are not needed.

REMOVE NECK BOARD

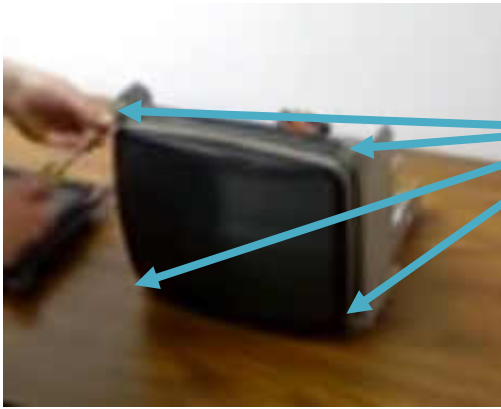
REMOVE THESE BOARDS



REMOVE DEGAUSS CABLE

REMOVE THE YOKE

Step #7) Unscrew the fasteners holding the CRT Frame from the Monitor Panel. Unplug dag spring cable and other blue cable. Cut the degauss zip ties off from the CRT. Keep the screws that held the CRT.



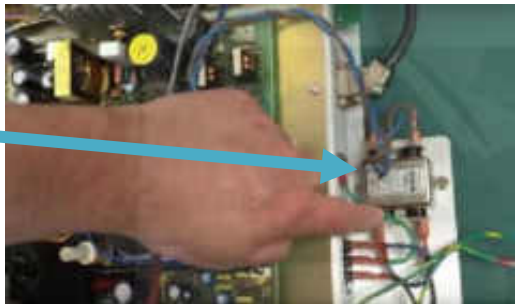
UNSCREW THESE
SCREWS
HOLDING THE
CRT IN PLACE.

Step #8) Remove the old video connector and the power supply and filter.



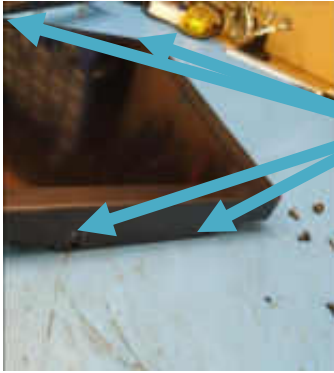
REMOVE THIS
CONNECTOR

Replace the
connector
removed with our
supplied adaptor
cable



ASSEMBLE:

Step #9) Install Counter Bezel on to the frame by unscrewing the 4 screws on the side of the monitor. Place the counter bezel in place. You can use silicone or double sided tape to attach the bezel or you can use the 4 brackets on the side to align holes where the screws were.



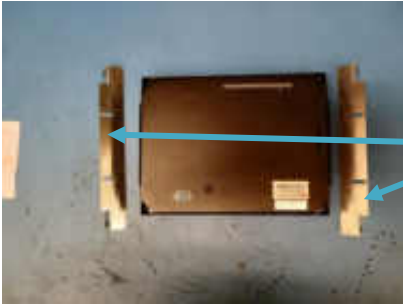
Remove the 4 screws on the side of the monitor.

Counter Bezel



Place the Counter Bezel on top the monitor, make sure the bracket holes line up with the screw holes.

Step #10) This line of Monitech Product has mounting brackets that you will attach onto the side of our monitor by unscrewing the screws on the side and placing the brackets on by screwing in the screws that you just removed, also use the holes from the bezel brackets. These brackets help you mount the monitor to the old CRT frame of your application.



Take the set of brackets out of the monitor box. The mounting ears should be towards the back of the monitor.

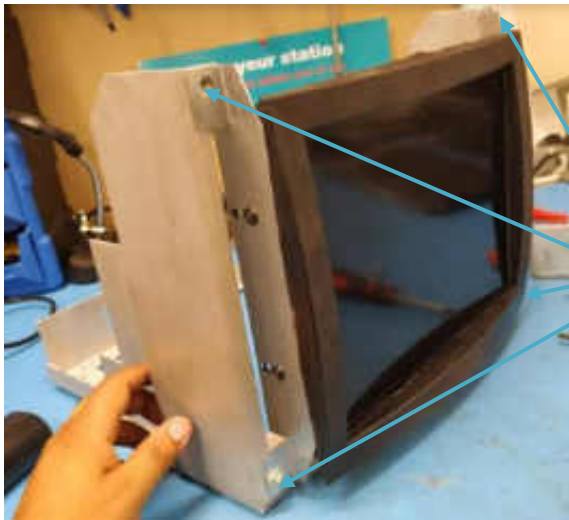


Place the brackets where the slots are. Use the screws previously taken off to fasten the brackets.

Make sure that the bezel and the brackets all attached.



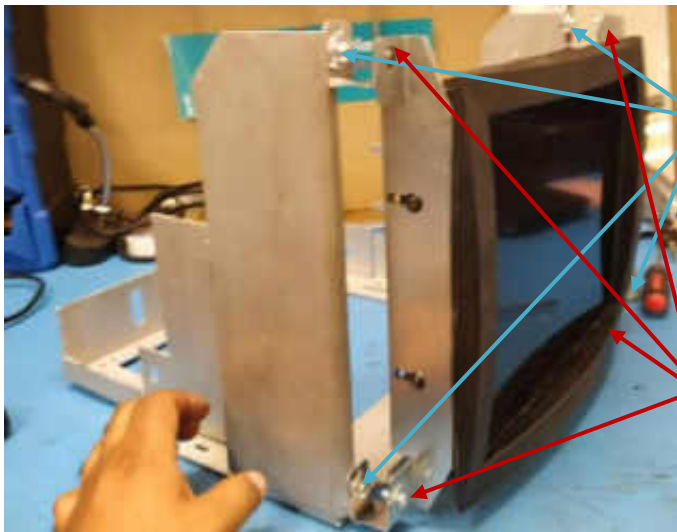
Step #11) Now you are left with the old CRT housing in which you are going to place your Monitech Monitor in. Use the CRT mounting screws to mount your Monitech Monitor onto the CRT Frame.



MOUNT YOUR MONITECH MONITOR BY USING THE SCREWS THAT FASTENED YOUR CRT.

OR

Step #11) Now you are left with the old CRT housing in which you are going to place your Monitech Monitor in. If the monitor is too far away from the front of the frame use (MK2004) to attach to 4 metal brackets onto the mounting holes where the CRT was using the same screws that mounted the CRT. Use the washer and screw to mount the monitor. If you don't need the LCD to move forward these 4 brackets are not needed.



MOUNT THE 4 BRACKETS HERE. MOUNT WITH THE SCREWS THAT FASTENED YOUR CRT.

MOUNT THE MONITOR IN PLACE BY USING THE SCREWS AND WASHERS IN MK2004, SCREW THROUGH THE PEM NUTS

Step #12) Connect the Video Connector (MAV526 or MAV003) & the Power Jack to your Monitech Monitor.

TIE SCRAP THE POWER BAR.

PLUG IN THE VGA SIDE INTO YOUR MONITECH MONITOR AND THE POWER JACK.



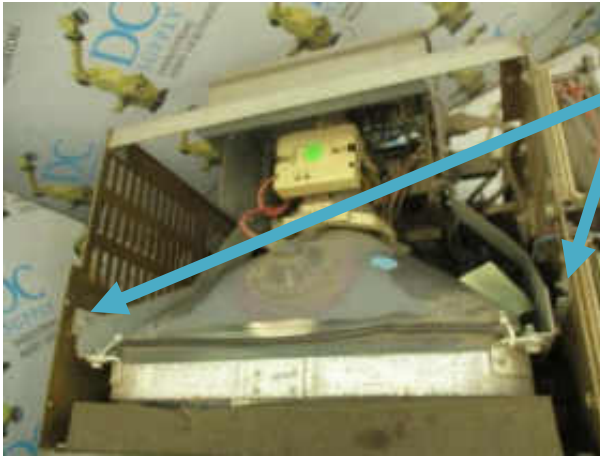
Step #13) Connect the Video Cable coming from machine to our adaptor cable either (MAV526 or MAV003). Connect the white power plug coming from your machine and connect it into our power supply (MAP307) or Connect (MAP302) to our power supply (MAP307) to plug into a wall outlet to power up seperatly.

CONNECT POWER AND VIDEO COMING FROM YOUR MACHINE TO OUR POWER SUPPLY AND VIDEO CABLE.



INSTALLATION:

Step #14) Mount the CRT Frame with our Monitech Monitor back into your front frame by using the screws that were holding it in the first place.



FASTEN THESE
SCREWS TO HOLD
THE CRT HOUSING
WITH YOUR
MONITECH MONITOR
IN PLACE.

Step #16) Put the front panel back into the machine by fastening the screws previously removed



SCREW THESE SCREWS
HOLDING THE FRONT
PANEL IN PLACE.

Step #17) Plug the fan power, plug the 5 wires for RGB V & H Hold and Screw the wires going to power terminal.



Plug in 5 Wire RGB H & V HOLD
Screw Power Terminal
Plug In Fan Power

Step #18) Turn ON Main Power and Machine Power. Adjust the screen with the user manual, or just press AUTO. Then put the back cover on.





UNSCREW
THESE SCREWS
HOLDING THE
FRONT PANEL IN
PLACE.

**YOU ARE ALL SET!!!
THANKS FOR YOUR
BUSINESS FROM THE
MONITECH FAMILY. 😊**

Keep your CINCINNATI Monitor + Other HMI's Up & Running!



5-wire touchscreen + Counter bezel for Cincinnati Milacron 950



12" Cincinnati 900 (1-288-0028) LCD Upgrade.



14" Cincinnati Milacron 2100 LCD Upgrade.



8" LCD Upgrade for Cincinnati 2500 x 10 CNC Hydraulic Shear with 9-10" CRT

For Technical Support & Inquiries Call
1-877-493-6105



20 Howard Place
Kitchener, Ontario N2K 4Z4
CANADA 519.725.2222