

LCD upgrade kit

**FOR YOUR 14" COLOR MAZAK MONITORS
C3470, CD1472, 8DSP40, 5470, CDT 14148B
& DR5614**



MONITECH
PRACTICAL SOLUTIONS FOR INDUSTRIAL DISPLAYS



IMPORTANT:

WARRANTY

Before using any MONITECH product please carefully review this Manual as well as any additional documentation provided with your shipment.

Attempting any of the following will void product warranty:

- unauthorized repairs or parts replacement
- inappropriate use or placement: exposing product to liquids, harmful gases, electrical shock, physical shock, temperatures beyond the range of -4°F to 140°F (-20°C to 60°C)
- use of electrical voltage other than 12V 4.16A (power supply and AC cable provided)
- Removal or modification of serial, product, or warranty labels.

	WARNING	
	ELECTRICAL HAZARD DO NOT OPEN	
<p>TO AVOID ELECTRICAL SHOCK DO NOT OPEN PRODUCT CASING. UNAUTHORIZED REPAIRS OR PARTS REPLACEMENT ARE PROHIBITED AND WILL VOID PRODUCT WARRANTY. PLEASE RETURN TO MONITECH FOR REPAIRS.</p>		

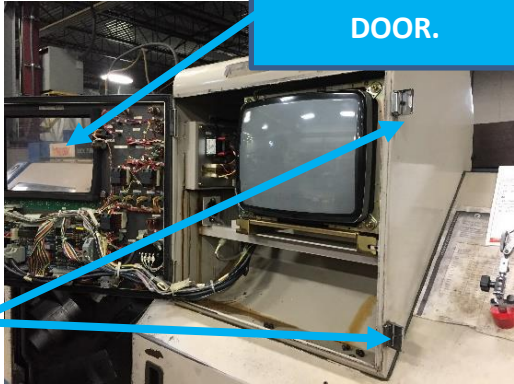
REMOVAL:

Step #1) Turn off turn off main power, turn off machine.

Step #2) Open up the front frame door by either unscrewing a fastener on side of the machine or opening the clips on the side of HMI. Keep the fastener for reinstallation.



CLIPS OR HINGES



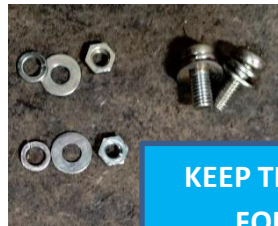
FRONT FRAME DOOR.

Step #3) Unscrew the fasteners holding your CRT frame in place. Keep all fasteners for re-mounting.



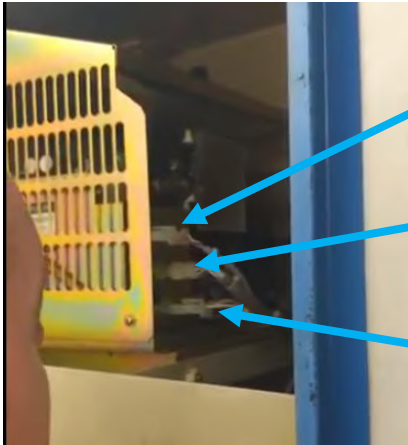
FASTNERS TO REMOVE

FASTNERS TO REMOVE



KEEP THESE FOR INSTALLATION

Step #4) Unplug the Molex 3 pin power connector and Molex 15 pin video connector, and the Molex 4 pin connector from the monitor. Then take out your CRT from your machine.

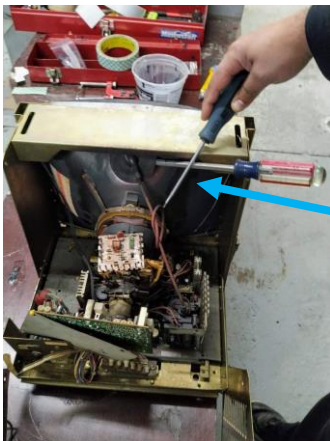


DISCONNECT THE
MOLEX 4 PIN
CONNECTOR

DISCONNECT THE 15
PIN MOLEX VIDEO
CONNECTOR

DISCONNECT THE
POWER CONNECTOR

Step #5) *IMPORTANT***.** Discharge the CRT, it has high voltage. Be careful. Put a flat head screw driver underneath the anode lead cap so it is touching the metal part. Get another screwdriver and cross it with the flat head used and touch the metal frame with it.

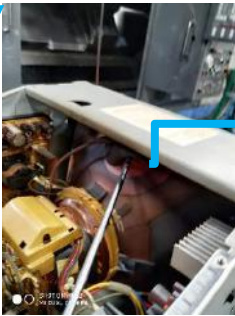
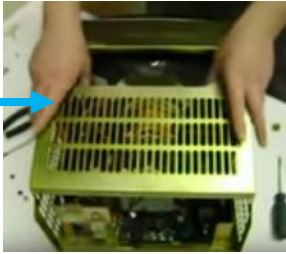


MAKE SURE TO
HAVE THE FLAT
SCREW DRIVES
TOUCHING.

Step #6) Now take your CRT with the frame onto your work bench. Follow these steps shown:



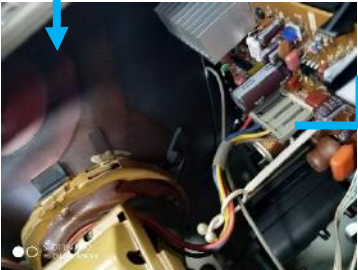
TAKE THE TOP COVER OFF THE FRAME



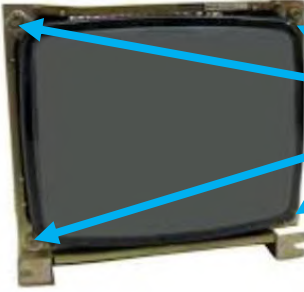
TAKE THE ANODE LEAD, OFF THE CRT.



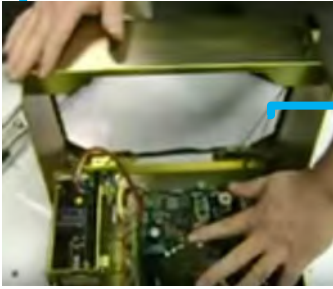
UNPLUG NECK BOARD OFF THE CRT.



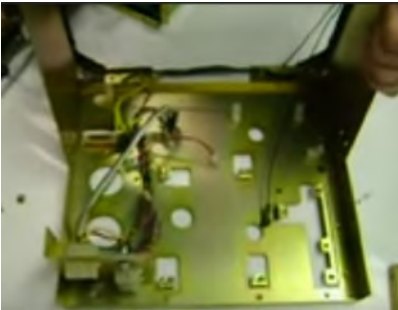
UNPLUG THE YOKE CONNECTOR.



TAKE THE CRT OFF THE FRAME BY UNSCREWING THE FASTENERS MOUNTING THE CRT IN PLACE. KEEP THESE FASTNERS FOR REASSEMBLY.

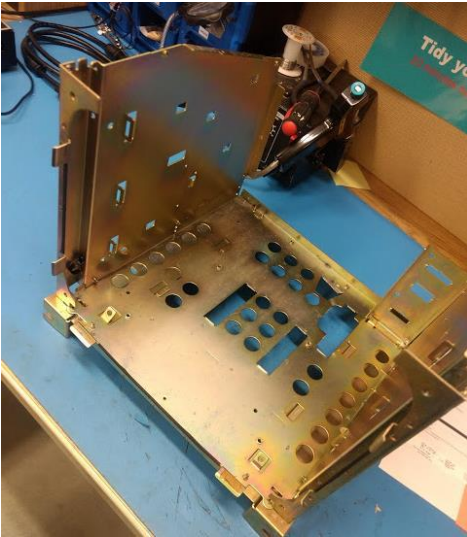


TAKE THE POWER SUPPLY & DRIVER BOARD OFF THE FRAME, BY UNSCREWING THE FASTNERS HOLDING THEM IN PLACE. UNPLUG ANY WIRES CONNECT TO THESE 2 ITEMS.



TAKE THE DEGASS COIL OFF BY USE OF SNIPS. REMOVE THE CONNECTORS ALL OTHER UNNESSARY ITEMS FROM THE FRAME. YOU SHOULD BE LEFT WITH SOMETHING LIKE THIS.





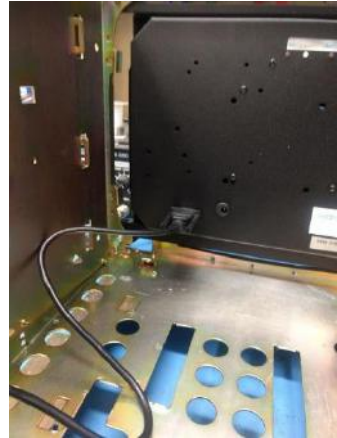
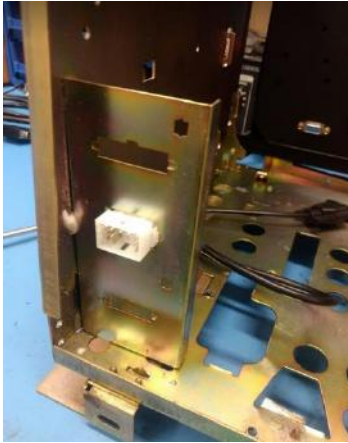
THIS IS WHAT YOUR LEFT WITH. YOU GOING TO MOUNT OUR LCD TO THIS FRAME AND PUT IT BACK INTO YOUR MACHINE.

ASSEMBLE:

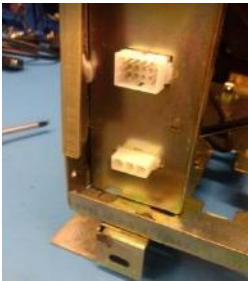
Step #7) Attach your Monitech Monitor to your CRT Housing Frame with our hardware kit (MH020). **(USE ALL THE PLASTIC HARDWARE WASHERS AT THE FRONT AND BACK OF THE MOUNTING EARS TO ISOLATE YOUR MONITOR.)**



Step #8) Attach our 15 PIN MOLEX Adaptor onto your frame. Connect the VGA to your Monitech Monitor, make sure the connector is seated properly.

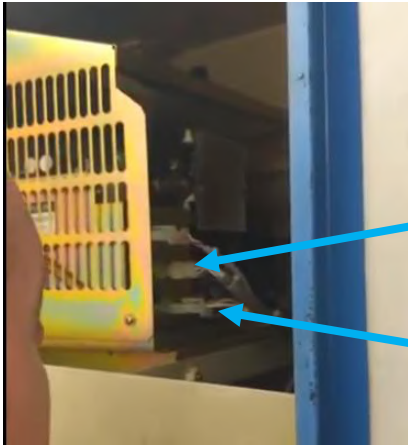


Step #9) Attach our MOLEX power adaptor onto your frame. connect it to the power supply. Mount the power supply by using double sided tape. Connect the jack into your Monitech Monitor.



INSTALLATION:

Step #10) Connect the Molex 3 pin power connector and Molex 15 pin video connector.



CONNECT THE 15 PIN
MOLEX VIDEO
CONNECTOR

CONNECT THE POWER
CONNECTOR

Step #11) Attach the old frame with the Monitech Monitor on it back into your machine using the mounting holes and the fasteners previously removed.



FASTNERS TO SCREW



FASTNERS TO SCREW

Step #12) Turn ON Main Power and Machine Power. Use the USER GUIDE to centre your image and make adjustments to see the letters properly. Once adjustments are done close the front frame door by screwing the fasteners in.



You are all set!!!
At MONITECH we thank you for your business.

Keep your MAZAK Workstations + Other HMI's Up & Running!



**LCD UPGRADES FOR ALL
14" MAZAK COLOR CRT'S**



**LCD UPGRADES FOR ALL 12"
MAZAK MONOCHROME CRT'S**



**LCD UPGRADES FOR L32,
14" COLOR CRT**



**LM8V302 - LCD Panel
(Mazak HMI)**

For Technical Support & Inquiries call

**For technical support, call
1-877-493-6105**

MONITECH

20 Howard Place
Kitchener, Ontario N2K 4Z4
CANADA 519.725.2222