

LCD upgrade kit

FOR YOUR ALLEN BRADLEY 1000 EL

Planar Systems monitor with electroluminescent panel found in:

2711-T10G1/G3/G8/G9/G20

2711-K10G3, 2711-K10G8, 2711-K10G9

Allen Bradley EL640480AM1 and EL640480A4

AVG Automation PGI100 – EL640480AA1

Mectron Qualifier EL640480A4

Van Dorn Pathfinder 3000 – EL640480AM8, EL640480A4, EL640480AM1



MONITECH
PRACTICAL SOLUTIONS FOR INDUSTRIAL DISPLAYS

IMPORTANT:

WARRANTY

Before using any MONITECH product please carefully review this Manual as well as any additional documentation provided with your shipment.

Attempting any of the following will void product warranty:

- unauthorized repairs or parts replacement
- inappropriate use or placement: exposing product to liquids, harmful gases, electrical shock, physical shock, temperatures beyond the range of -4°F to 140°F (-20°C to 60°C)
- use of electrical voltage other than 12V 4.16A (power supply and AC cable provided)
- Removal or modification of serial, product, or warranty labels.

	WARNING	
	ELECTRICAL HAZARD DO NOT OPEN	
TO AVOID ELECTRICAL SHOCK DO NOT OPEN PRODUCT CASING. UNAUTHORIZED REPAIRS OR PARTS REPLACEMENT ARE PROHIBITED AND WILL VOID PRODUCT WARRANTY. PLEASE RETURN TO MONITECH FOR REPAIRS.		

REMOVAL:

Step #1) Turn off turn off main power, turn off machine.

Step #2) Unplug the AC power & communication ports. Take the terminal out of your machine.



Step #3) Unscrew the 10 screws, at the back of AB 1000, to open the front bezel. Keep the screws for re-assembly.



Step #4) Open up the front bezel carefully, make sure you do not stretch the ribbon cable for the Touchscreen. Have the front bezel lean on something to avoid the ribbon cable from ripping. Unscrew the 4 screws holding the original EL screen in place. (KEEP THESE SCREWS FOR RE-ASSEMBLY). Unplug the video power cable from the back of the EL screen.



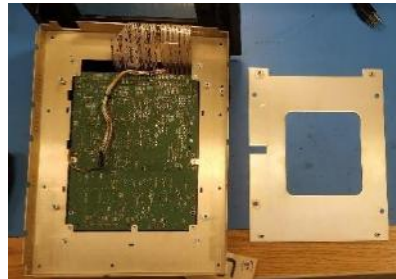
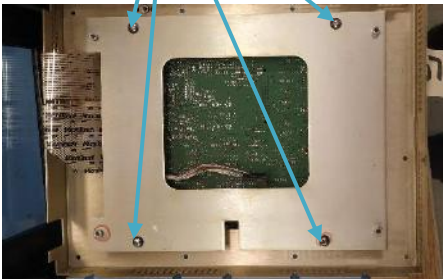
Unscrew these screws.



Unplug this connector

Step #5) Here is the empty chassis. If you have a gold colored AB 1000, take the mounting bracket off the assembly by unscrewing the fasteners.

Unscrew these screws.



INSTALLATION:

FOR THE BLACK FRAME MOUNTING

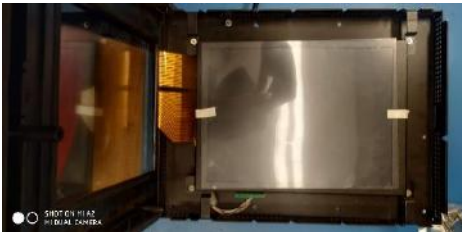
Step #6) Now you are left with the empty chassis. Open up MH1000EL and get the ferrite bead and attach it to the video cable as shown. Then plug in the connector into our Monitor.



Step #7) Turn on the screen by using the AC plug, plugged into a wall plug. Then use the menu to adjust the screen size and other adjustments. Use the USER GUIDE to guide you how to use the menu.

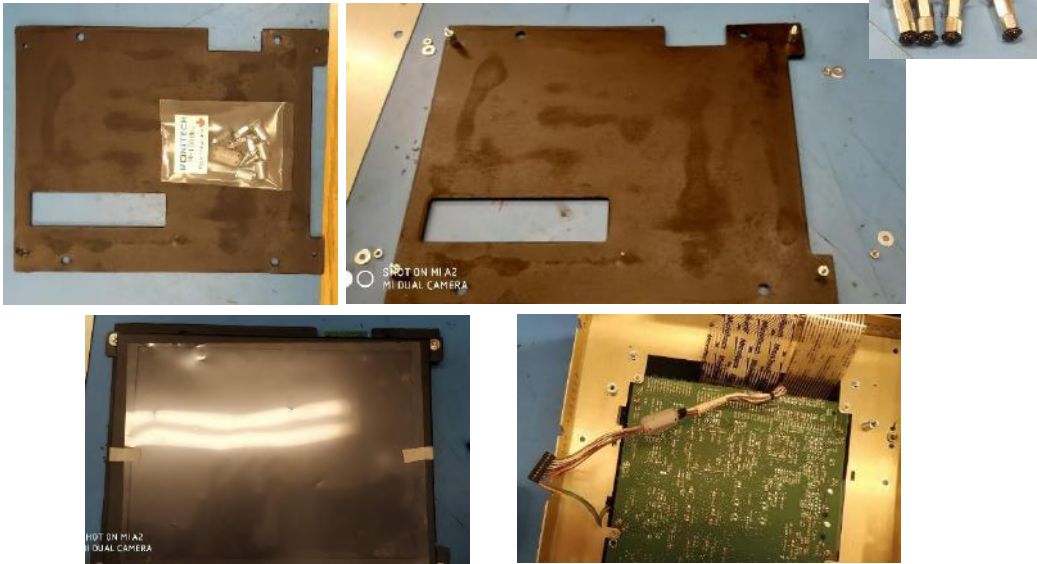


Step #8) Mount the Monitor into the frame using the screws that fastened your EL screen. Mount as shown.

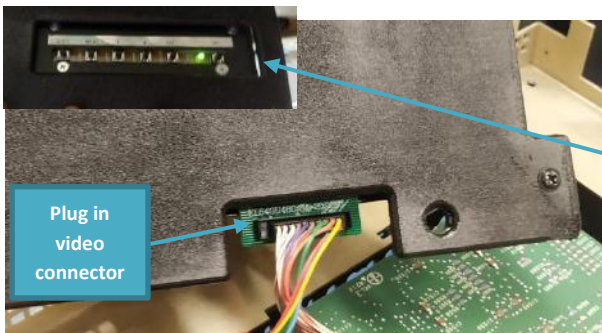


FOR THE GOLD FRAME MOUNTING

Step #6) Now you are left with the empty chassis. For the gold chasis use **MK1000EL**. Mount the Monitech LCD onto the plastic piece as shown. The attach the ferrite bead on the video connector as shown.

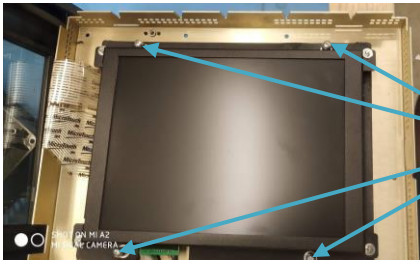


Step #7) Connect the the video connector into the LCD as shown. Turn on the screen by using the AC plug, plugged into a wall plug. Then use the menu to adjust the screen size and other adjustments. Use the **USER GUIDE** to guide you how to use the menu.





Step #8) Mount the assembly by placing it here as shown. Use the rest of the hardware to mount the assembly.



Use the spacers as washers. Have the assembly go as down as possible. Screw into the frame with the 8-32 screws provided in our kit.

STEPS FOR BOTH AB 1000 EL TYPES

Step #9) Reassemble by making sure that the Touchscreen ribbon cables are good and in the right place and then screw in the screws for the back to mount everything together. Then test on the bench use the AC power. Mount the full assembly back into your machine connect power and the communication ports.



Screw these screws in.



Keep your AB PanelView's up and running!



Replacement: LCD's, Backlight's, Keypad's & Touchscreen's for the whole 550 line.



Replacement: LCD's, Backlight's, Keypad's & Touchscreen's for the whole 600 line.



Replacement: LCD's, Backlight's, Keypad's & Touchscreen's for the whole 900 line.



Replacement: LCD's, Backlight's, Keypad's & Touchscreen's for the whole 1000 line.



Replacement: CRT TO LCD CONVERSION's, Backlight's, Keypad's & Touchscreen's for the whole 1200 line.



Replacement: CRT TO LCD CONVERSION's, Backlight's, Keypad's & Touchscreen's for the whole 1400 line.

For Technical Support & Inquiries call

1-877-493-6105

Support@Monitech.com

MONITECH

20 Howard Place
Kitchener, Ontario N2K 4Z4
CANADA 519.725.2222