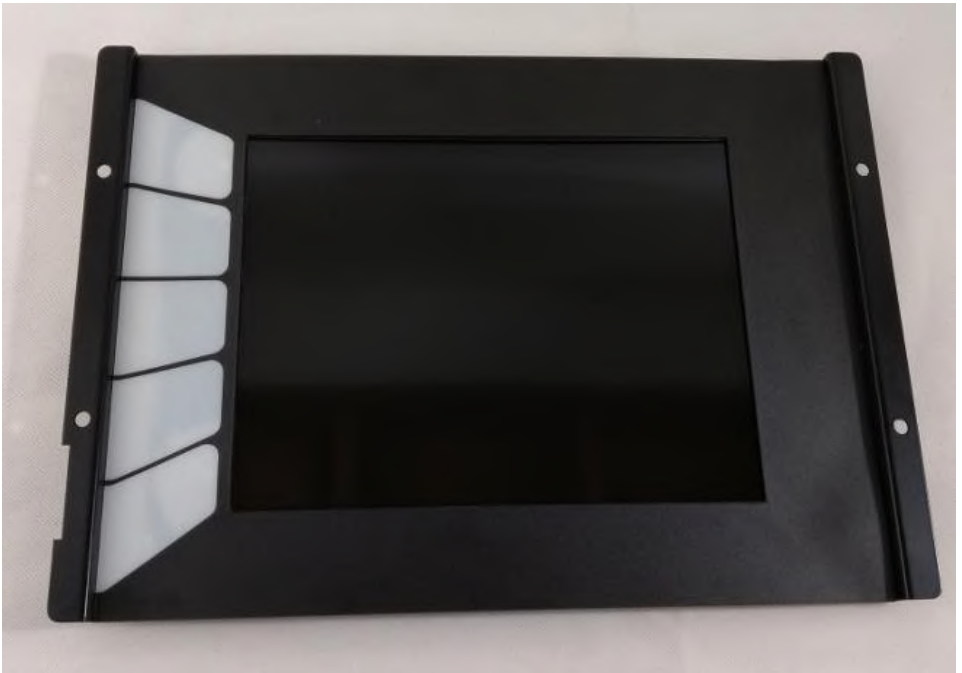

Replacement LCD

For Flat Panel Assembly for Panel mate Power Pro
5785 - Panel mate Power Pro Eaton / Cutler
Hammer Model 5785K - Replaces Sharp
LQ130V3DZ31



MONITECH
PRACTICAL SOLUTIONS FOR INDUSTRIAL DISPLAYS



IMPORTANT:

WARRANTY

Before using any MONITECH product please carefully review this Manual as well as any additional documentation provided with your shipment.

Attempting any of the following will void product warranty:

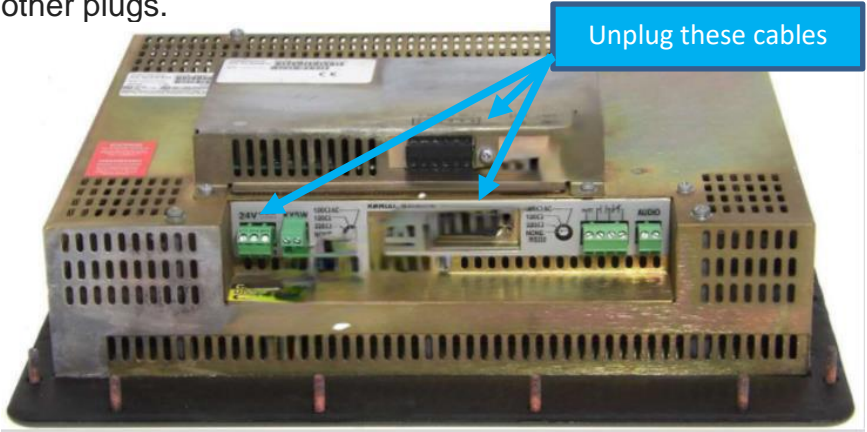
- unauthorized repairs or parts replacement
- inappropriate use or placement: exposing product to liquids, harmful gases, electrical shock, physical shock, temperatures beyond the range of -4°F to 140°F (-20°C to 60°C)
- use of electrical voltage other than 12V 4.16A (power supply and AC cable provided)
- Removal or modification of serial, product, or warranty labels.

	WARNING	
	ELECTRICAL HAZARD DO NOT OPEN	
TO AVOID ELECTRICAL SHOCK DO NOT OPEN PRODUCT CASING. UNAUTHORIZED REPAIRS OR PARTS REPLACEMENT ARE PROHIBITED AND WILL VOID PRODUCT WARRANTY. PLEASE RETURN TO MONITECH FOR REPAIRS.		

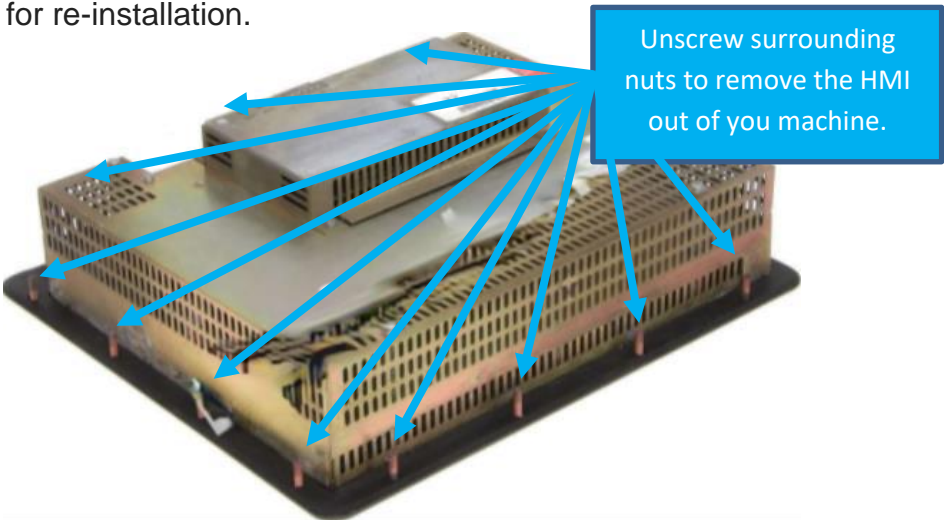
REMOVAL:

Step #1) Turn off turn off main power, turn off machine.

Step #2) Unplug the 24 VDC Power Plug, Serial Ports and other plugs.

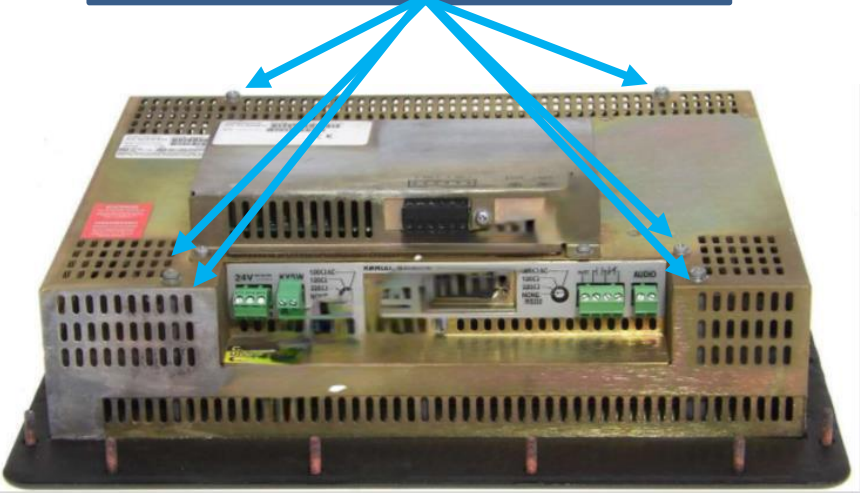


Step #3) Remove the HMI out of the machine by Unscrewing the mounting nuts around the HMI. Keep nuts for re-installation.

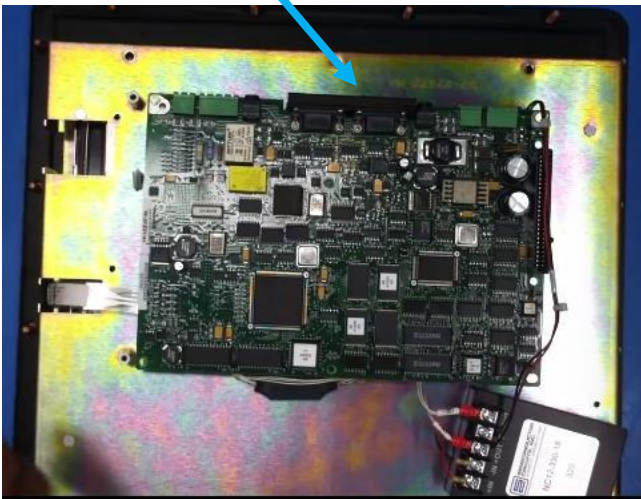


Step #4) Remove the back metal & the board from the HMI by unscrewing the following screws. Keep screws from re-installation.

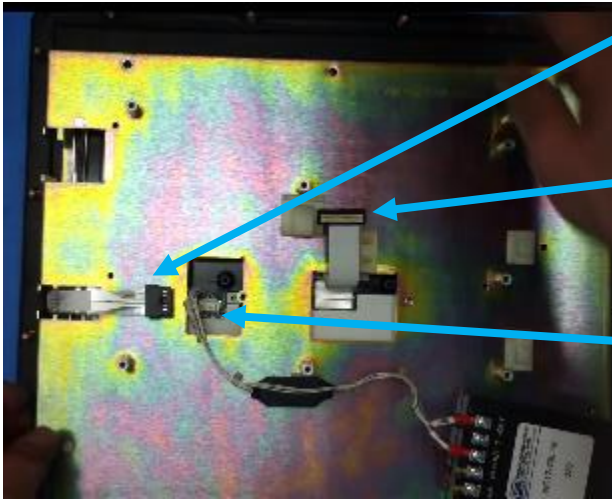
Unscrew these screws to remove the back metal



Remove the board, by unscrewing the board.



Step #5) Unplug the power connector, the LVDS cable & the Touchscreen Connector

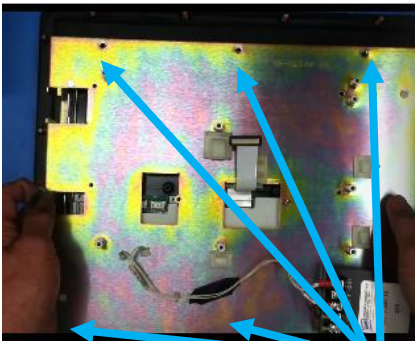


Unplug the Touchscreen Connector

Unplug the LVDS Cable

Unplug the Power Connector

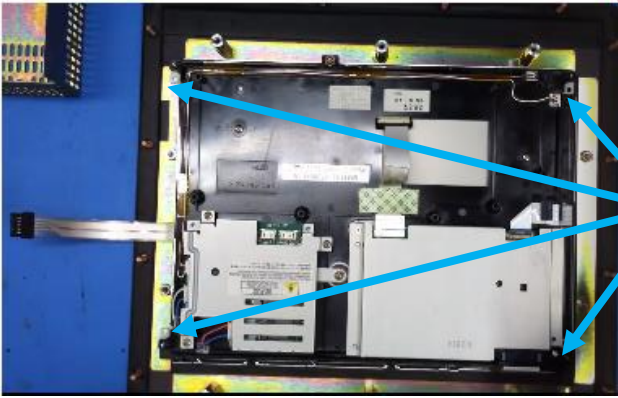
Step #6) Unscrew the screws holding the middle metal to take it off.



Unscrew surrounding screws to remove the middle metal off



Step #7) Remove the LCD from the HMI, by unscrewing the 4 screws that is mounting the LCD.

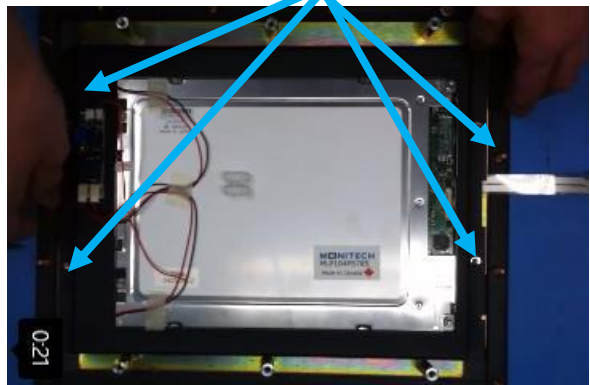
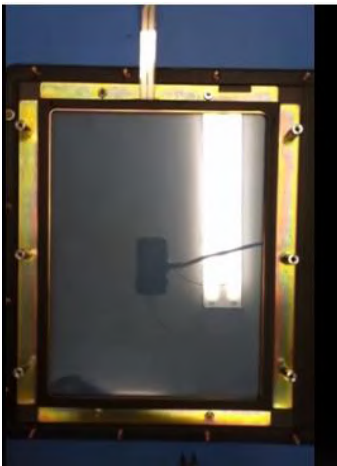


Unscrew these screws to remove the LCD Panel

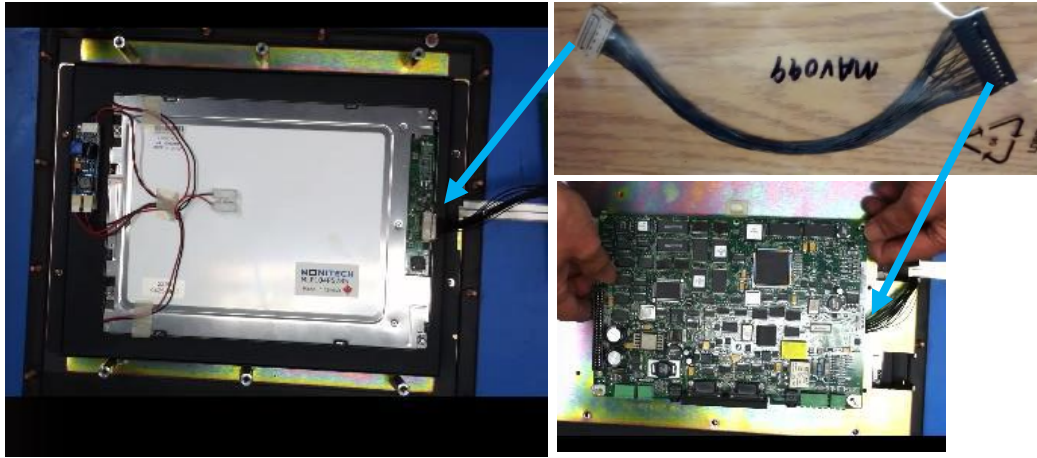
INSTALLATION:

Step #8) Get your Monitech Monitor MP104P5785 & cables proved to you in the box. Place the Monitech LCD Replace into this position. And fasten the LCD with the nuts to hold the Monitor on the studs

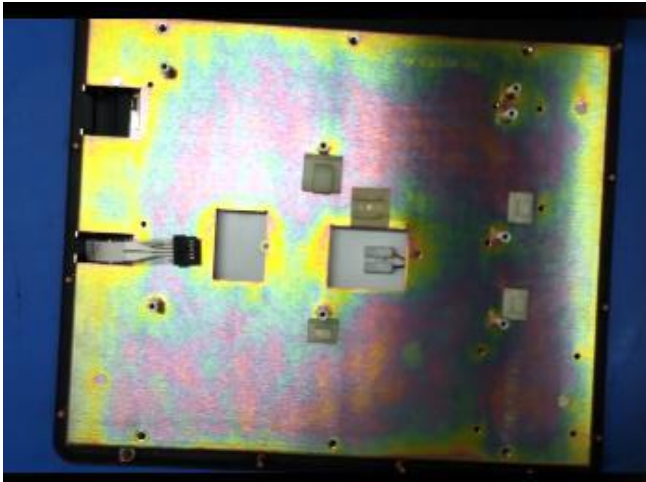
Screw the nuts into the studs to hold the LCD in place



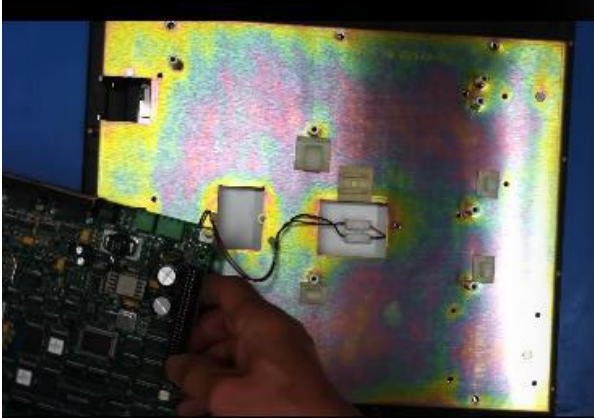
Step #9) Get the board removed in Step # 4.
Get the LVDS Cable from our box. Plug it into
the LCD and the Board.



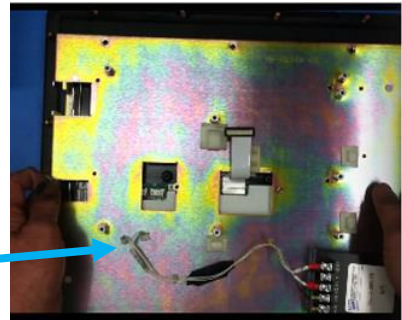
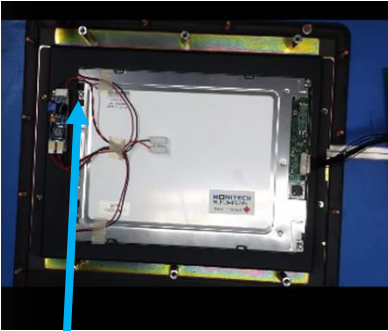
Step #10) Place the middle metal piece back on.
Screw in the middle metal and on with the
screws.



Step #11) Cut the RED & Black wires from the power supply to the board. then connect the red and black into our white terminal as shown.



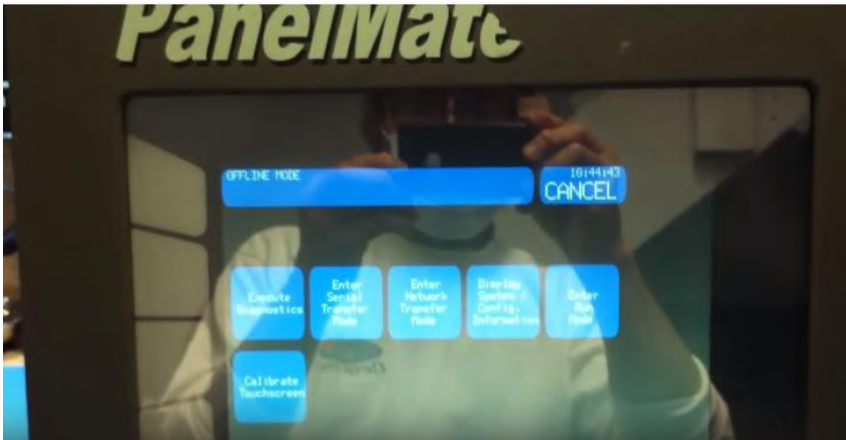
OR Use MAV098 instead.



Step #12) Mount the board back onto the middle metal. Then connect your touch screen cable back on the board. Mount the power supply back on the middle metal.



Step #13) Mount the back cover back with the screws and then power up the HMI with 24 VDC. Then mount your HMI back in your machine.



Enjoy your rejuvenated display!!! From the Monitech Family we thank you for business.

Keep your PANELMATE HMI's up and running!



ML1211LMATE -12.1" LCD Upgrade for (Panelmate/Cutler) with 14" CRT. Just take a picture of your video connector

ML080MATE -8" LCD Upgrade for (Panelmate/Cutler) with 9" CRT. Just take a picture of your video connector



MPC21P -LCD Panel kit for the PanelMate 1775K

MF1775T- Touchscreen and overlay and Plexiglas for Panelmate 1775T. 8.0" Touchscreen.

For Technical Support, Call
1-877-493-6105
Support@Monitech.com



20 Howard Place
Kitchener, Ontario N2K 4Z4
CANADA 519.725.222