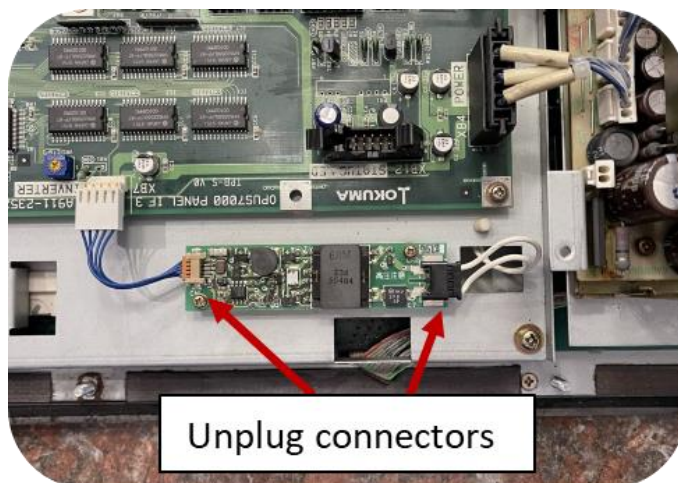


## QUICK INSTALL GUIDE

## MONITECH MB7000M

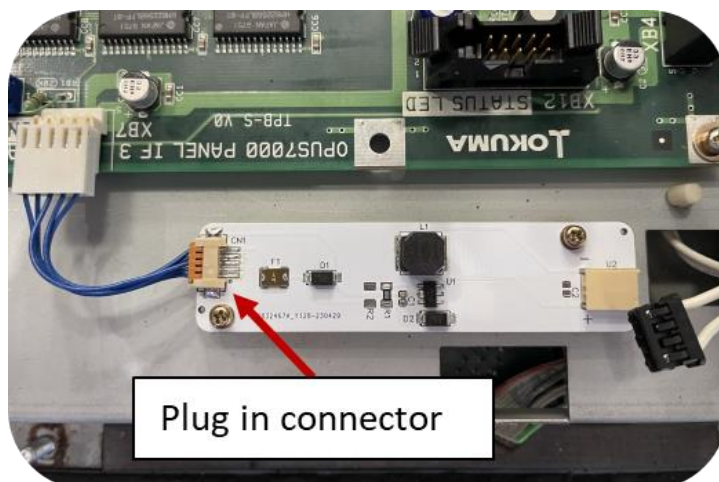
## Step 1

Unplug connectors and remove the original inverter board.



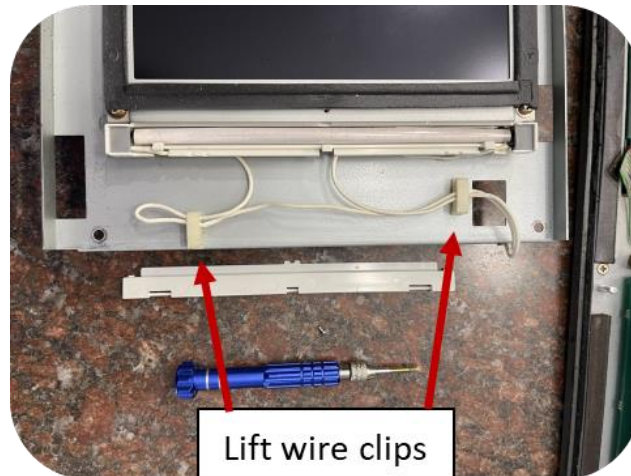
## Step 2

Install your new Monitech LED inverter where the original inverter was and plug in the connector.



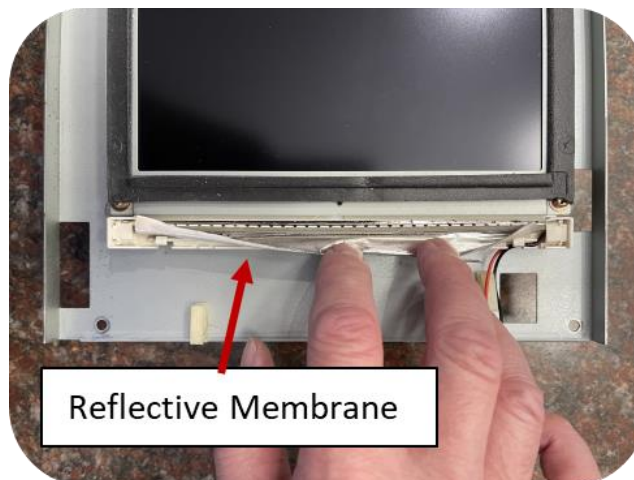
## Step 3

Lift up wire clips and remove original CCFL bulb.



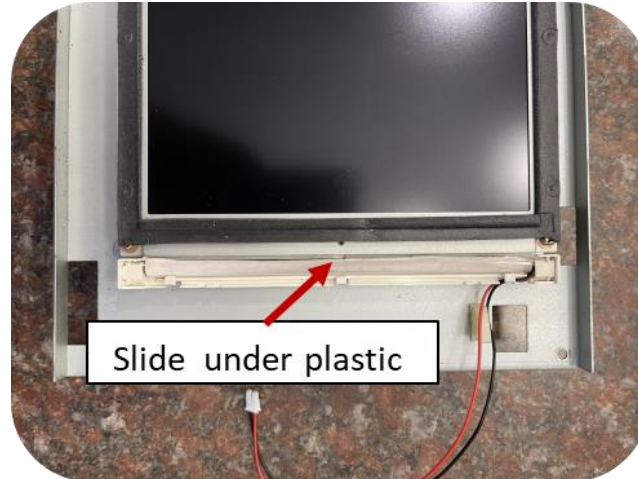
## Step 4

Carefully pull back reflective membrane and insert your Monitech LED strip.



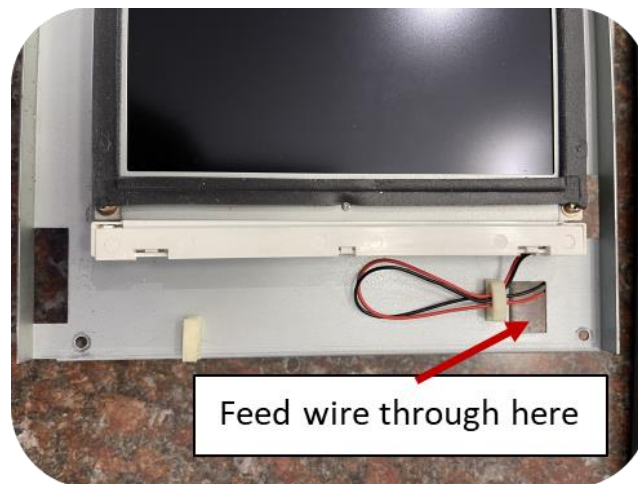
## Step 5

Carefully tuck reflective membrane under the plastic of the LCD.



## Step 6

Loop the power cable into cable clip and close both clips and tuck wire through hole. Plug power into the inverter board.



Do you need help  
with this product?

**Please contact:**  
1877-493-6105  
[monitech.com/support/technical-support/](http://monitech.com/support/technical-support/)