

# Fagor 8025 WITHOUT OVERLAY INSTALL/USER GUIDE



Work with:

8025T, TS, TGI, GP, M, MS, MG

# IMPORTANT

## WARRANTY

Before using any MONITECH product please carefully review this Manual as well as any additional documentation provided with your shipment.

### Attempting any of the following will void product warranty:

- unauthorized repairs or parts replacement
- inappropriate use or placement: exposing product to liquids, harmful gases, electrical shock, physical shock, temperatures beyond the range of -4°F to 140°F (-20°C to 60°C)
- use of electrical voltage other than 12V 4.16A (power supply and AC cable provided)
- Removal or modification of serial, product, or warranty labels.

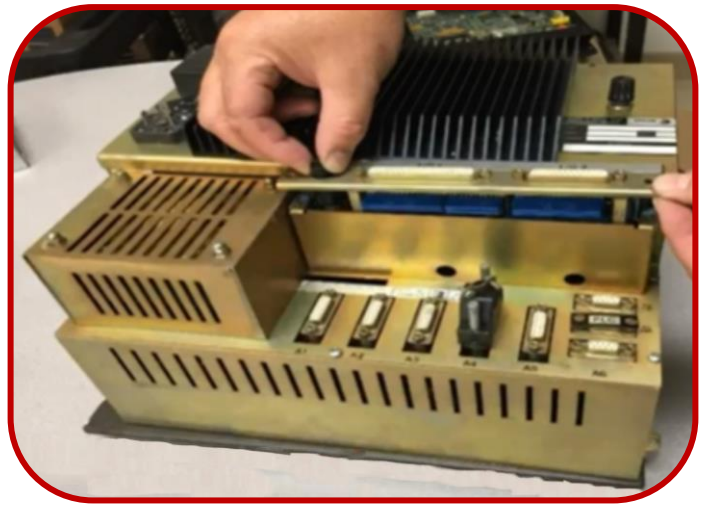
	<b>WARNING</b>	
	<b>ELECTRICAL HAZARD DO NOT OPEN</b>	
TO AVOID ELECTRICAL SHOCK DO NOT OPEN PRODUCT CASING. UNAUTHORIZED REPAIRS OR PARTS REPLACEMENT ARE PROHIBITED AND WILL VOID PRODUCT WARRANTY. PLEASE RETURN TO MONITECH FOR REPAIRS.		

# PART 1 - REMOVAL

## Step 1 – Turn off machine and turn off main power breaker.

Unscrew the screws around the border of the HMI. Unplug the communication cables and power. Take a Picture before unplugging any cables, so when you install the HMI back into your machine, you will know where the cables attach.

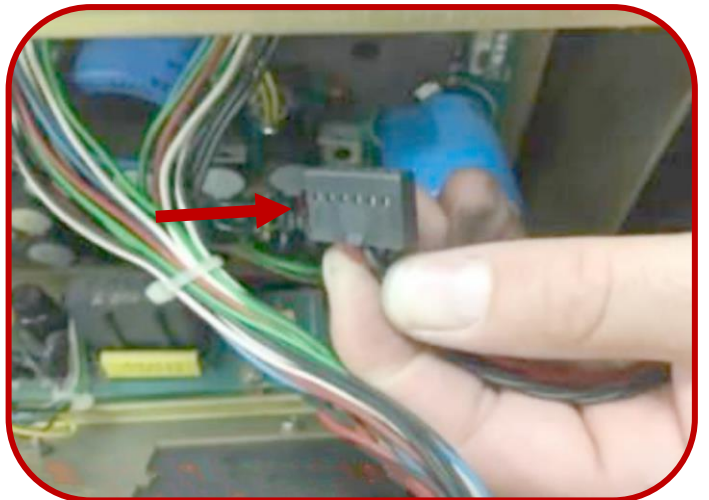
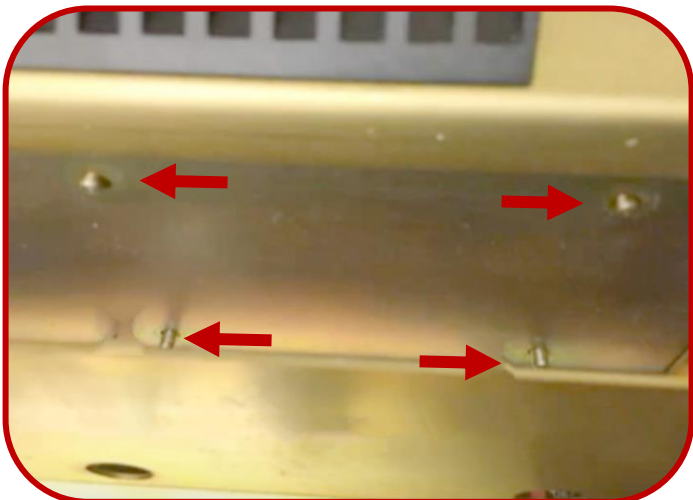
Remove thumb screws to get access to the I/O Card and remove it.



## Step 2 – Access the power supply.

Remove the 4 nuts that hold your CRT Monitor.

Open the back cover and remove the power cable.



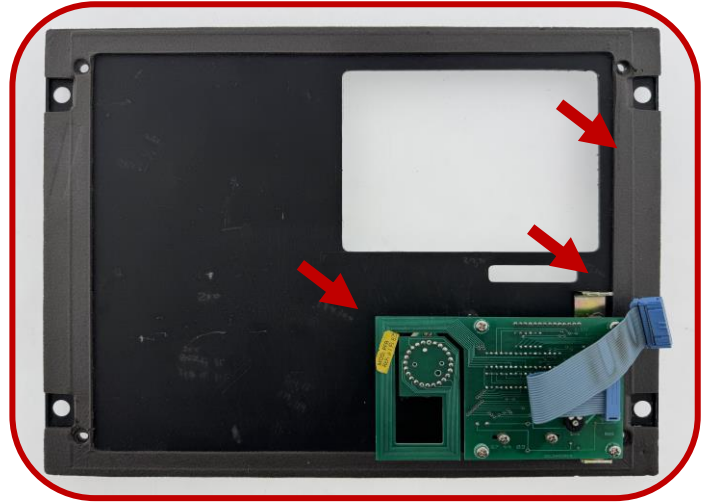
## Step 3 – Removing the front panel and removal of old CRT.

---

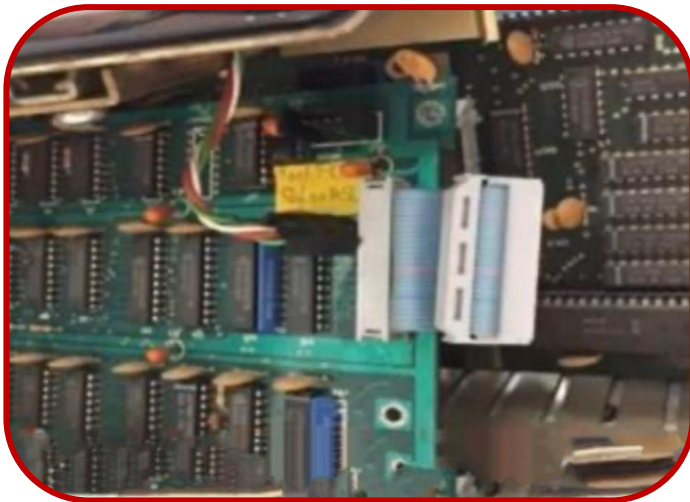
Open the front cover by unscrewing the four screws holding in place.



Remove PCB and standoffs holding the hinge on. Remove door from hinge and foam (surrounding the outside). Making sure that there is flat bare metal.



Unplug the video cable from the video card. Remove the video circuit board to give you access to remove the monitor.



Remove the old monitor from the inside of the controller.

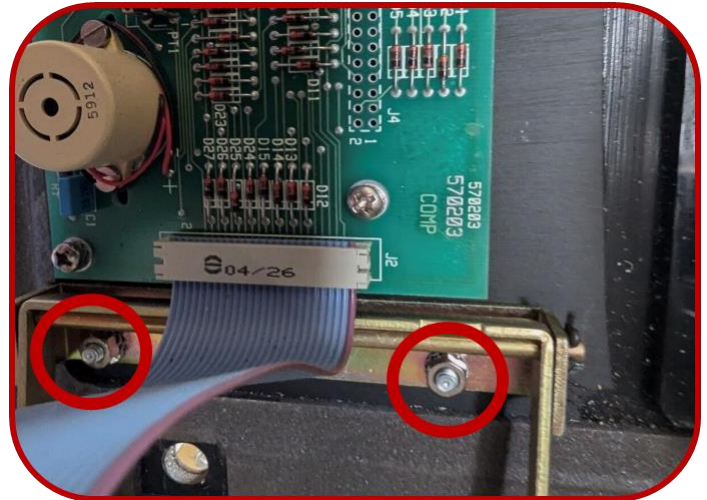
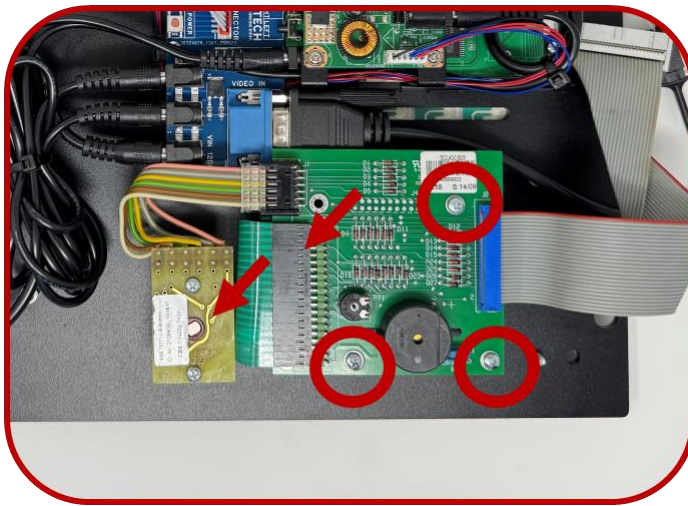


## PART 2 - INSALLATION

### Step 1 – Securing PCB, select switch and hinge to new front panel.

Install the new LCD assembly to the back of the OEM door, being careful to line up the hole for the selection switch and install the PCB and plug in the overlay cable.

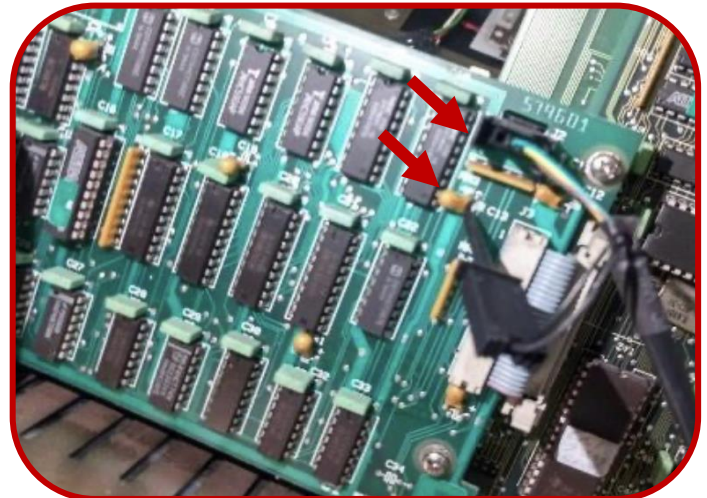
Reinstall standoffs and door hinge to the controller.



### Step 2 – Reconnecting the cables.

Connect the user control cable back to the controller.

Connect the video cable back to the proper connector and attach the GND wire to C13. Alternatively, you can connect GND to JP5 or JP6.



## Step 3 – Connecting power within the controller. We have two different options for this.

---

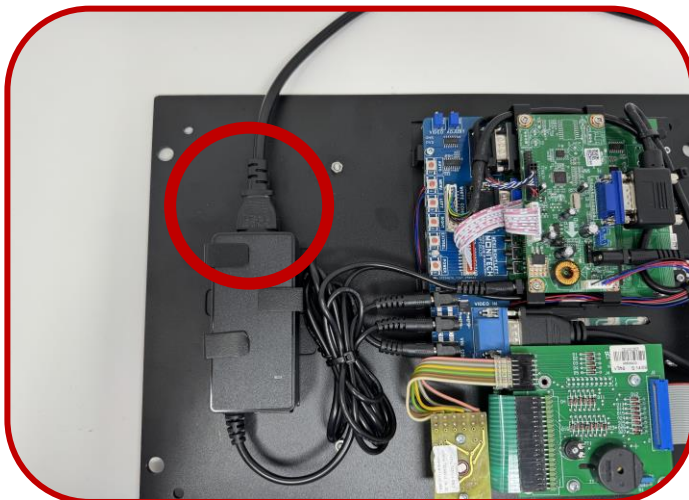
Option 1 - MAP335 Connect the plug into the end of MAP307

Cut the two red wires connected to the fuses. Strip the insulation and stick ends into red crimp connectors and crimp each side to MAP307. Also connect to the GND.



Option 2 - MAP335 Connect the plug into the end of MAP302

Plug the other end into a receptacle, extension cord, or power bar.

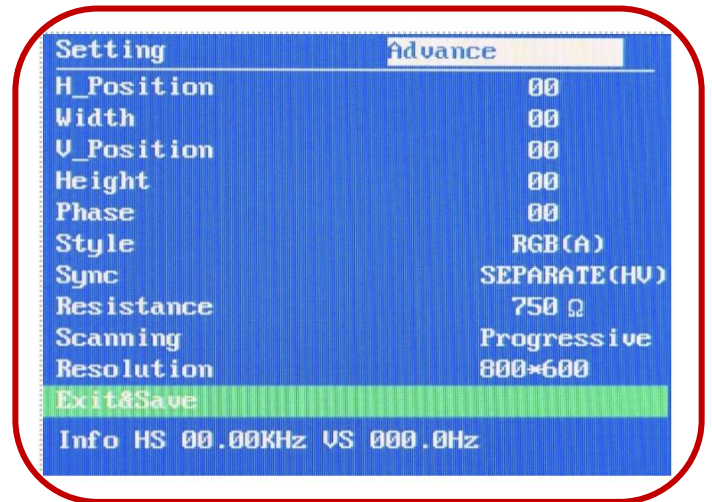
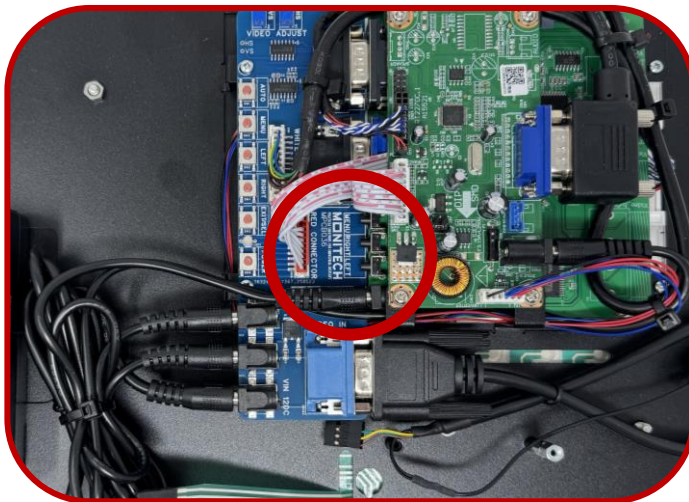


## PART 3 – SETUP

Step 1 – Make sure you have a video signal. Once the unit is all put back together and hooked up, turn the power on. The monitor will start automatically. \*If there is no video, you will get a blue screen.

Now that you have your video signal, use the 3 buttons on the back of the LCD to optimize the video for your specific machine. Press MENU to open the menu.

Press MENU again to select an item. When the item is selected, it will turn red. Press RIGHT or LEFT to adjust values. Press MENU again to go back to the list and use the RIGHT or LEFT to move up and down in the list. As long as you are getting a video signal, your settings will be automatically saved.



Step 2 – Fine tune your video image. To size your video image, focus on the first five items.

---

### **WIDTH**

This is a very useful setting: use it to adjust the width of the video on your screen. Use it as well to eliminate vertical lines. The range is -99 to +99.

### **H\_POSITION (HORIZONTAL)**

The default value is 00. The range is -99 to +99.

### **PHASE**

After you use the WIDTH setting, some vertical lines may still be present. Use this setting to eliminate them entirely.

### **SYNC**

This setting automatically detects what you are using. You can adjust to Separate (UV), Composite (S) or SOG (sync-on-green).

### **SCANNING**

Defaults Progressive and rarely needs adjustment.

### **EXIT + SAVE**

The menu will exit and save automatically after 20 seconds. If you are in a hurry, you can select this item manually.

### **HEIGHT**

The height defaults to 00 and the range is 00 to +99.

### **V\_POSITION (VERTICAL)**

Defaults to 00. The range is 00 to +99.

### **STYLE**

RGB (A) is the default. If you are using this LCD as monochrome and want a black and white screen instead of green, change the style to YUV. RGB (D) is also available.

### **RESISTANCE**

750  $\Omega$  is the default. If your video is saturated or text is “blooming” like the image on the left, change it to 75  $\Omega$ .

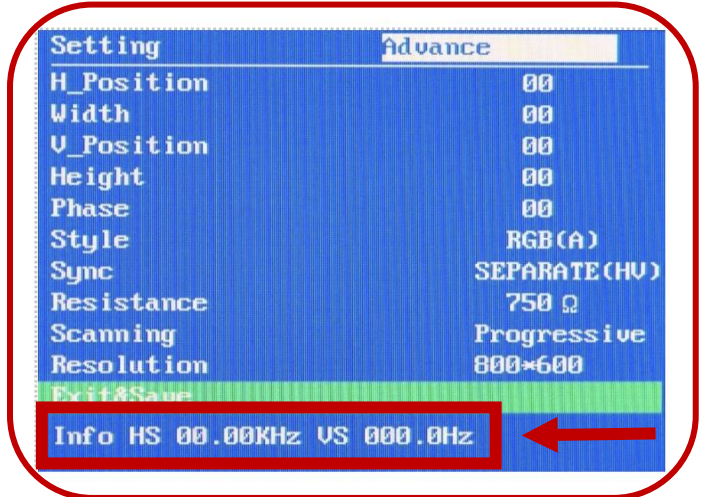
### **RESOLUTION**

Defaults to 800x600. If the video still won't fit on the screen after adjusting the WIDTH setting, change the resolution to 640x480.

# PART 4 - TROUBLESHOOTING

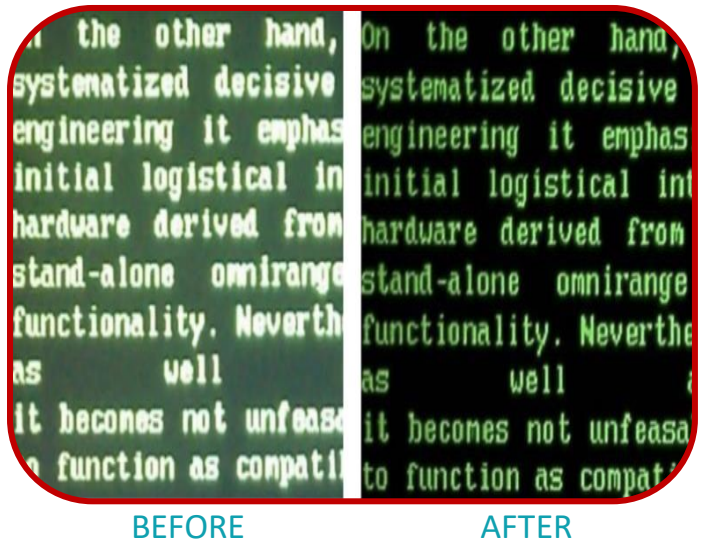
## Symptom 1 – No video

This picture shows the default values for each item. The bottom line (Info) shows specific values for your machine's video signals. NOTE: If the Info values show 00.00, there is no video signal. Verify that the video cable is secured before you do anything else.



## Symptom 2 – Video is saturated, or text is “blooming”

To fix this issue, adjust the RESISTANCE value in the settings from 750 Ω to 75 Ω.



### Symptom 3 – Top left image is “tearing”

---

The horizontal adjustment has been set up at the factory, and sometimes a slight adjustment is required.

Turn the HS pot slowly CW, if the image improves. If the image gets worse or turns blue, then turn the pot in the CCW direction until the image improves.

Once the “tearing” is gone, stop turning pot.



### Symptom 4 – Double or blurry image

---

The vertical adjustment has been set up at the factory, and sometimes a slight adjustment is required.

Turn the VS pot slowly CW, if the image improves. If the image gets worse or turns blue, then turn the pot in the CCW direction until the image improves.

Once the “tearing” is gone, stop turning pot



### Symptom 5 – Need to reset the vertical and horizontal pots

---

Horizontal default setting: Turn pot CW until you hear a click, then turn CCW 3 turns.

Vertical default setting: Turn pot CW until you hear a click, then turn CCW 16.5 turns.

